

广东纳德新材料有限公司

商务中心：广东省佛山市禅城区湖景路8号1区37座P1号
生产基地：广东省肇庆市高新区凤岗路7号

T: 86-757-8669 9629 F: 86-757-8669 9629
E: sa@nadenet.com, nade@188.com www.nadenet.com

福建水头办事处地址：福建省南安市水头镇弘一机械城H8
M: 86-139 0283 6660/86-139 2911 2035

广东云浮办事处地址：广东省云浮市云城区河口镇云龙路口
M: 86-139 2911 2035

GUANGDONG NADE NEW MATERIAL CO.,LTD

Business address: P1, Building 37, Zone 1, No 8 Hujing Road,
Chancheng District, Foshan, Guangdong, China.

Factory address: No.7 Fenggang Road, High-Tech Zone,
Zhaoqing city, Guangdong, China

Fujian Shuitou Office Address: H8, Hongyi Machinery
Market, Shuitou Town, Nan'an City, Fujian, China

Guangdong Yunfu Office Address: Yunlong Crossing, Hekou
Town, Yuncheng District, Yunfu City, Guangdong, China



石材装备、工具、耗材

Stone Equipment
Tool and Consumptive Material

广东纳德新材料有限公司
www.nadenet.com

Nade 纳德



公司简介 Company Profile

广东纳德新材料有限公司创建于2005年，纳德长期专注于石材磨抛与防污领域的专项技术开发，纳德积累了丰富的生产工艺技术。是目前唯一一家能同时提供整线装备、磨块与金刚石制品、超洁亮纳米液防污材料及综合配套服务的企业。纳德自主研发的石材智能磨抛防污整线装备，已成功应用于石英石、无机石、天然花岗岩及大理石板材的加工，与传统机型相比，在节能减排、磨抛质量、智能控制以及清洁生产等方面都有明显的优势。纳德从提升磨抛品质和为客户提高综合效益两方面入手，坚持在磨块与金刚石制品的研发，为客户提供更优的解决方案。纳德致力于用超洁亮纳米技术解决石材的防污问题，经使用达到了可靠的防污效果。

2016年，纳德通过国家高新技术企业认证；《广东省陶瓷抛光防污设备及新材料工程技术研究中心》等一批政府支持的专业研究机构先后落户纳德；2019年5月，纳德《大板智能磨抛防污生产线》项目、《基于超洁亮技术的持久防滑功能陶瓷砖工艺技术研发与应用》项目通关国家级科技成果鉴定，总体技术分别达到国际领先和国际先进水平。

2019年1月27日，位于广东省肇庆市大旺高新开发区的生产基地正式起用，为纳德的再次腾飞提供了坚实的产业基础。在全国各大石材产区以及印度、土耳其、巴西、伊朗、阿联酋、哈萨克斯坦、越南等国家与地区设有售后服务机构。

Guangdong Nade new material company Ltd. is established in 2005. Many years of constantly dedicated research and development of stone slabs polishing, squaring and antifouling special technology. We accumulated a wealth of production experience and technology by taking many years polishing material and service. At present, we are the only enterprise that can provide stone polishing whole line equipment, abrasives and diamond tools, super clean and bright nano-liquid and comprehensive technology supporting services. Nade company independently did research and development of intelligent stone polishing, squaring and Nano polishing full line equipment. Our machine has been successful applied in production of quartz stone, natural stone(marble), artificial quartz slab, and artificial inorganic stone. Our machine compared with traditional machine, has obvious advantages in energy conservation and emission reduction, grinding quality, intelligent control and clean production. Nade company focus on how to improve the tiles polishing, squaring, and nano polishing quality and how to reduce the customers production costing, so we research and development abrasives and diamond tools to provide customers with better production problem solutions. Nade company is committed to solve the problem of antifouling of stone slab materials with ultra-clean and bright nano-technology.

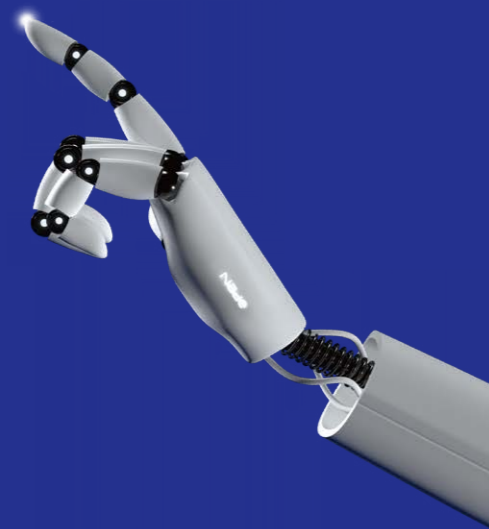
In 2016, Nade company passed the national high-tech enterprise certification. A number of government-supported professional research institutions, such as Guangdong ceramic polishing anti-pollution equipment and new material engineering technology research center, have successively settled in Nade company. In May 2019, Nade company passed the national scientific and technological achievement appraisal for the project of "intelligent polishing and squaring machine and Nano polishing production line for ceramic big slabs tiles" and "Research and development and application of durable non-slip ceramic tile technology based on super clean and bright technology", the project passes through the national level science and technology achievement appraisal, the overall technology has reached international leading and advanced levels respectively.

On January, 27th, 2019, Nade new production base start production located in Dawang hightech zone, Zhaoqing city, Guangdong province. Nade new factory provide a solid industrial foundation for Nade company develop and take off again. Nade company has set up aftersales service institution in domestic main ceramic production zone and other oversea countries such as India, Turkey, Brazil, Iran, United Arab Emirates, Kazakhstan and Vietnam.

Nade 纳德

您的标准 纳德智造

NADE'S PRODUCTS - TAILORED TO YOUR NEEDS



广东纳德新材料有限公司
GUANGDONG NADE NEW MATERIAL CO.,LTD.
www.nadenet.com

目录 CONTENT

石材装备
Machinery



- 01-02 NDPGH 系列石材连续磨机
NDPGH series stone polishing machine
- 03-04 NDPGL 系列石材连续磨机
NDPGL series stone polishing machine
- 05-06 NDYD 系列圆盘定厚机
NDYD series disc caliberating machine
- 07-08 NDYD 系列圆盘定厚磨机
NDYD series disc caliberating and polishing machine
- 09-10 NDNP 系列纳米抛光机
NDNP series Nano polishing machine
- 11 NDMB 系列磨边机
NDMB series squaring and chamfering machine
- 12 NDFB 系列翻板车
NDFB series loader
- 12 NDFM 系列侧向翻面机
NDFM series side over-turning machine
- 13 NDXB 系列修边线
NDXB series edge trimming line

磨块与金刚石制品
Abrasive And Diamond Tool



- 14 金刚石定厚磨条
Diamond caliberating segment
- 15 锯片式焊接圆柱轮
Saw blade welded cylindrical wheel
- 16 石材金刚石磨块
Diamond abrasive
- 17 树脂磨块
Resin-bond abrasive
- 18 碳化硅磨块
Silicon carbide abrasive
- 19 研磨刷
Grinding brush
- 20 金刚石排锯
Diamond gang saw

超洁亮纳米液
Nano Liquid



- 21 超洁亮纳米液及其应用
Super clean nano liquid and application

综合配套服务
Technical Support And Service



- 22 综合配套服务
Technical support and service



NDPGH系列石材连续磨机

NDPGH series stone polishing machine

适用于天然花岗岩、人造石英石、人造无机石和微晶石板材的磨抛加工

Suitable for grinding and polishing of natural granite, artificial quartz stone, artificial inorganic stone and microcrystallized stone.



介绍 Characteristic

- 磨头可选配高效同步节能电机，转速稳定，可节能 10% 以上；
- 加厚机架和底板，全新横梁摆动结构设计，整机运行稳定，横梁摆动速度最快可达 60 米 / 分钟，抛光效率高；
- 采用纳德专用磨头，可安装 T1 (L=140mm) 或 T2 (L=170mm) 磨料，效率高，更省磨料；
- 配备板形轮廓扫描检测系统和磨头提升高度控制系统，具备自动避让功能，边角抛光质量更好，自动化程度高；
- 配备电子尺磨料检测系统，对应磨头磨料用完可自动报警并提醒操作工更换磨料，智能化程度高；
- 采用大尺寸触摸屏，参数调整更便捷；
- 可选配远程故障诊断系统，运行维护更方便。

- Equipped with high-efficiency synchronous energy-saving motor, the polishing head can have stable speed and save power more than 10%.
- Reinforced frame and bottom plate; New design of beam swing structure; Stable running of the whole machine; The beam swing speed is up to 60 m / min; High efficiency of polishing slabs.
- With Nade special polishing head, T1 (L=140mm) or T2 (L=170mm) abrasive can be installed, which is more efficient and less abrasive consume.
- Equipped with a profile scanning detection system and a polishing head lifting height control system ,together with automatic avoidance function, which can achieve better corner polishing quality and high automation
- Equipped with electronic ruler abrasive detection system, it can automatically alarm and remind the operator to change the abrasive when the it is used up. This is highly intelligent machine.
- Large size touch screen for easier parameter adjustment
- Optional remote fault diagnosis system for easier operation and maintenance

参数说明 Parameter Description

设备类型及型号 TYPE	磨头个数 NO.OF HEAD	横梁 TYPE OF BEAM	工作厚度 (mm) WORKING THICKNESS	工作宽度 (mm) WORKING WIDTH	总功率 (KW) TOTAL POWER	耗水量 (L/min) WATER CONSUMPTION	外形尺寸mm (LxWxH) OVERALL SIZE	参考重量(KG) WEIGHT FOR REFERENCE
NDPGH21/20	20	双 double	10-50	800-2100	334	600	16813x3210x2470	40000
NDPGH21/16	16	单 single	10-50	800-2100	259	480	13150x3210x2470	32000
NDPGH21/12	12	单 single	10-50	800-2100	199	360	10832x3210x2470	28000
NDPGH21/06	6	单 single	10-50	800-2100	102	180	7421x3210x2470	17000
NDPGH16/20	20	双 double	10-50	800-1650	334	600	16813x2710x2470	36000
NDPGH16/16	16	单 single	10-50	800-1650	259	480	13150x2710x2470	28000
NDPGH16/12	12	单 single	10-50	800-1650	199	360	10832x2710x2470	25000
NDPGH12/20	20	双 double	10-50	600-1250	320	600	16813x2230x2470	33000
NDPGH12/16	16	单 single	10-50	600-1250	252	480	13150x2230x2470	26000
NDPGH12/12	12	单 single	10-50	600-1250	192	360	10832x2230x2470	23000
NDPGH08/16	16	单 single	10-50	600-830	252	480	13150x1830x2470	24000

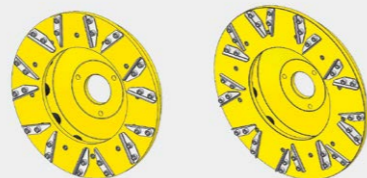
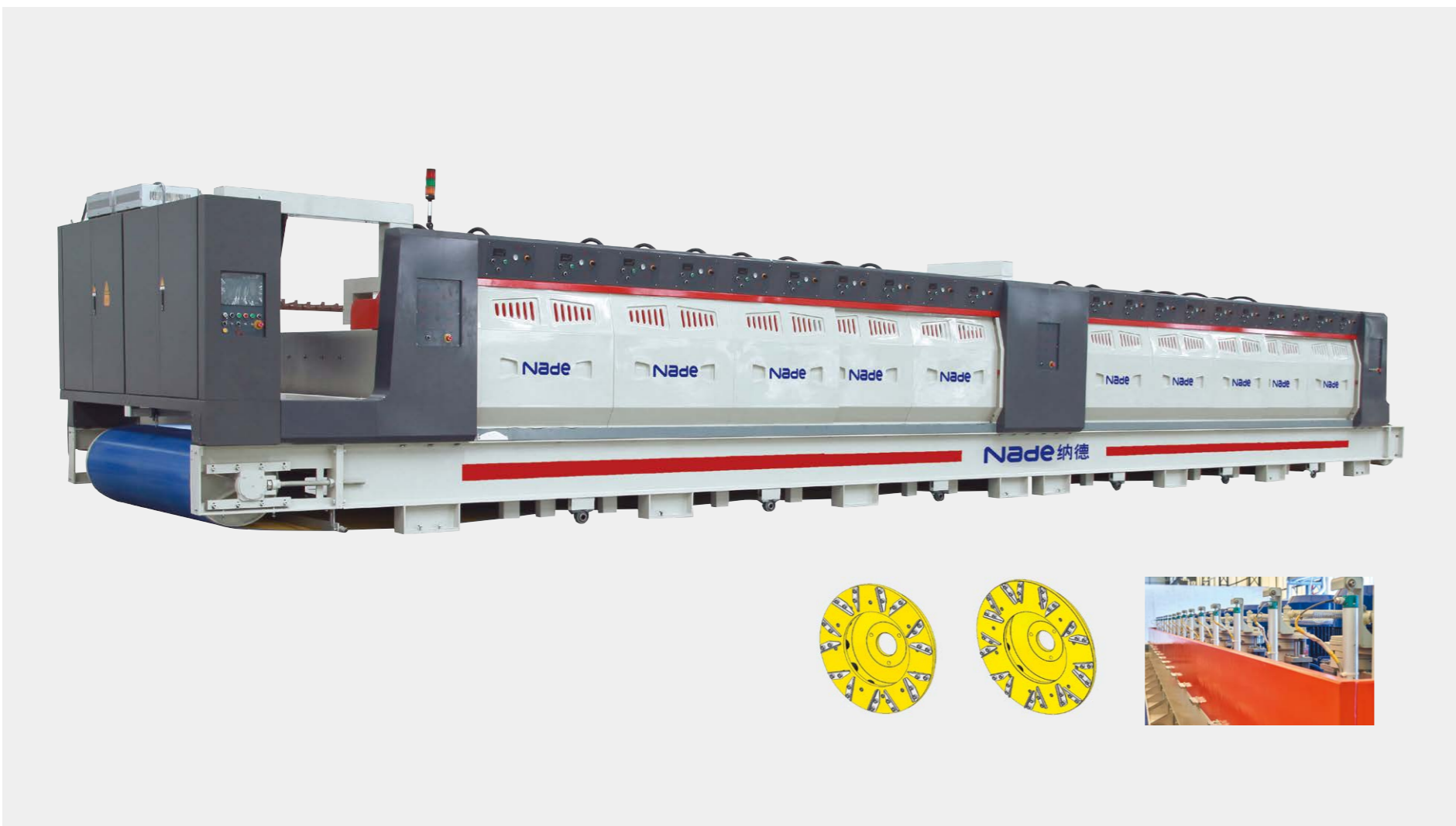


NDPGL系列石材连续磨机

NDPGL series stone polishing machine

适用于天然大理石、人造岗石、大理石复合板材的磨抛加工。

Suitable for grinding and polishing of natural marble, artificial marble, marble composite tile.



介绍 Characteristic

- 磨头可选配高效同步节能电机，转速稳定，可节能 10% 以上；
- 加厚机架和底板，全新横梁摆动结构设计，整机运行稳定，横梁摆动速度最快可达 60 米 / 分钟，抛光效率高；
- 采用新型磨盘设计，多种直径磨盘可选，可安装 7 块或 9 块磨料，效率高，更省磨料；
- 配备板形轮廓扫描检测系统和磨头提升高度控制系统，具备自动避让功能，边角抛光质量更好，自动化程度高；
- 配备电子尺磨料检测系统，对应磨头磨料用完可自动报警并提醒操作工更换磨料，智能化程度高；
- 采用大尺寸触摸屏，参数调整更便捷；
- 可选配远程故障诊断系统，运行维护更方便。

- Equipped with high-efficiency synchronous energy-saving motor, the polishing head can have stable speed and save power more than 10%.
- Reinforced frame and bottom plate; New design of beam swing structure; Stable running of the whole machine; The beam swing speed is up to 60 m / min; High efficiency of polishing slabs.
- With new design of grinding disc, a variety of diameter discs are available. 7 or 9 pieces of abrasive can be installed, it has high efficiency and less abrasive consume;
- Equipped with a profile scanning detection system and a polishing head lifting height control system ,together with automatic avoidance function, which can achieve better corner polishing quality and high automation
- Equipped with electronic ruler abrasive detection system, it can automatically alarm and remind the operator to change the abrasive when the it is used up. This is highly intelligent machine.
- Large size touch screen for easier parameter adjustment
- Optional remote fault diagnosis system for easier operation and maintenance.

参数说明 Parameter Description

设备类型及型号 TYPE	磨头个数 NO.OF HEAD	横梁 TYPE OF BEAM	工作厚度 (mm) WORKING THICKNESS	工作宽度 (mm) WORKING WIDTH	总功率 (KW) TOTAL POWER	耗水量 (L/min) WATER CONSUMPTION	外形尺寸mm (LxWxH) OVERALL SIZE	参考重量(KG) WEIGHT FOR REFERENCE
NDPGL21/20	20	双 double	10-50	800-2100	256	600	16813x3210x2470	38000
NDPGL21/16	16	单 single	10-50	800-2100	196	480	13150x3210x2470	31000
NDPGL21/12	12	单 single	10-50	800-2100	151	360	10832x3210x2470	27000
NDPGL21/06	6	单 single	10-50	800-2100	76	180	7421x3210x2470	16000
NDPGL12/16	16	单 single	10-50	600-1250	193	480	13150x2360x2470	25000
NDPGL08/16	16	单 single	8-50	300-850	193	480	13150x1960x2470	24000

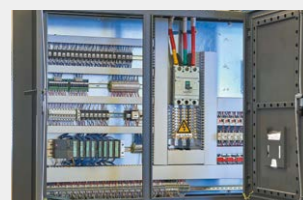


NDYD系列圆盘定厚机

NDYD series disc caliberating machine

适用于人造石英石、人造无机石、人造岗石、天然花岗岩、大理石复合板的定厚加工。

Suitable for caliberating of artificial quartz stone, artificial inorganic stone, artificial marble, natural granite and marble composite tile.



介绍 Characteristic

- 全新横梁和箱体设计，加厚机架和底板，重心低，运行平稳，切削效率高，加工板材平整度好；
- 定厚头可选配自动升降系统，系统可根据金刚石刀头消耗程度及时自动补偿，同时具备板材厚度超差报警功能，智能化程度高；
- 配备触摸屏，调整参数更方便，自动化程度高；
- 可选配远程故障诊断系统，运行维护更方便。

- New design of beam and box-body; Reinforced frame and bottom plate; Low center of gravity; Stable operation; High cutting efficiency; Good flatness of caliberated slabs.
- The caliberating head can be equipped with an automatic lifting system. The system can automatically compensate according to the consumption degree of the diamond tools. It has also the function of alarm for exceeding thickness of the slab. It is a highly intelligent machine.
- With touch screen for easier parameter adjustment
- Optional remote fault diagnosis system for easier operation and maintenance.

参数说明 Parameter Description

设备类型及型号 TYPE	磨头个数 NO.OF HEAD	工作厚度(mm) WORKING THICKNESS	工作宽度(mm) WORKING WIDTH	总功率(KW) TOTAL POWER	耗水量(L/min) WATER CONSUMPTION	外形尺寸mm(LxWxH) OVERALL SIZE	参考重量(KG) WEIGHT FOR REFERENCE
NDYD21/08	8	10-50	800-2100	190	720	10285x3400x2470	28000
NDYD21/06	6	10-50	800-2100	146	540	8685x3400x2470	24500
NDYD16/08	8	10-50	800-1650	190	720	10285x2900x2470	25500
NDYD16/06	6	10-50	800-1650	146	540	8685x2900x2470	23000
NDYD12/08	8	10-50	600-1250	190	720	10285x2450x2470	24000
NDYD12/06	6	10-50	600-1250	146	540	8685x2450x2470	22000



NDYD系列圆盘定厚磨机

NDYD series disc caliberating and polishing machine

适用于人造石英石、人造无机石板材的定厚磨抛加工。

Suitable for caliberating and polishing of artificial quartz stone and artificial inorganic stone.



介绍 Characteristic

- 专门设计用于人造石英石和无机石板材的背面定厚加工，通过后面的粗磨头彻底消除定厚刀头的板面刮痕，让板材背面效果更好；
- 全新横梁和箱体设计，加厚机架和底板，重心低，运行平稳，切削效率高，加工板材平整度好；
- 双横梁设计，定厚和粗磨横梁摆动速度独立可调，加工效率更高；
- 定厚头可选配自动升降系统，系统可根据金刚石刀头消耗程度及时自动补偿，同时具备板材厚度超差报警功能，智能化程度高；
- 磨头配备磨料报警装置，具备自动避让功能，自动化程度高；
- 配备触摸屏，调整参数更方便。

- Specially designed for the backside caliberation of artificial quartz stone and inorganic stone stone. The rough polishing head can completely eliminated the scratch of the caliberating head to get the slab with better quality backside;
- New design of beam and box-body; Reinforced frame and bottom plate; Low center of gravity; Stable operation; High cutting efficiency; Good flatness of caliberated slabs.
- Double beam design. The swing speed of cablberating beam and rough polishing beam can be adjusted independently. These can reach higher processing efficiency.
- The caliberating head can be equipped with an automatic lifting system. The system can automatically compensate according to the consumption degree of the diamond tools. It has also the function of alarm for exceeding thickness of the slab. It is a highly intelligent machine.
- There is abrasive alarm device on rough polishing heads. It has function of automatic avoidance. It is a high degree of automation machine.
- With touch screen for easier parameter adjustment

参数说明 Parameter Description

设备类型及型号 TYPE	定厚头个数 NO.OF CALIBERATING HEAD	磨头个数 NO.OF HEAD	横梁 TYPE OF BEAM	工作厚度(mm) WORKING THICKNESS	工作宽度(mm) WORKING WIDTH	总功率(KW) TOTAL POWER	耗水量(L/min) WATER CONSUMPTION	外形尺寸mm (LxWxH) OVERALL SIZE	参考重量(KG) WEIGHT FOR REFERENCE
NDYD21/07+4	7	4	双 double	10-50	800-2100	235	750	13775x3400x2470	36000
NDYD16/07+4	7	4	双 double	10-50	800-1650	235	750	13775x2800x2470	33000
NDYD12/07+4	7	4	双 double	10-50	600-1250	235	750	13775x2450x2470	30000



NDNP系列纳米抛光机

NDNP series nano polishing machine

适用于人造岗石、人造石英石和人造无机石材的上光防污加工。

Suitable for increasing gloss and antifouling on artificial marble, artificial quartz stone and artificial inorganic stone.



介绍 Characteristic

- 采用纳德公司专用行星磨盘，配合纳德公司专用纳米液，光度可提高 30 度以上，同时大幅提高板面的防污能力；
- 具备磨块消耗自动补偿功能，系统可根据纤维磨块消耗程度及时自动补偿，精确控制磨盘抛光压力，抛光效果好，智能化程度高；
- 具备自动滴液功能，最大程度减少纳米液的损耗；
- 配备板形轮廓扫描检测系统，磨头具备自动避让功能，自动化程度高；
- 配备触摸屏，参数调整更便捷。

- Using Nade's special planetary grinding disc and Nade's special nano-liquid, the gloss can be increased by more than 30 degrees. And greatly improve the degree of anti-fouling on slab surface .
- With function of automatic compensation of abrasive consumption, it can automatically compensate according to the consumption degree of the fiber abrasive.It can accurately control the pressure of the grinding disc to achieve the good polishing result and the high intelligence.
- Automatic liquid drop function to minimize nano-liquid loss
- Equipped with profile scanning detection system, the grinding head has an automatic avoidance function. It is a high degree of automation machine.
- With touch screen for easier parameter adjustment

参数说明 Parameter Description

设备类型及型号 TYPE	磨头个数 NO.OF HEAD	工作厚度(mm) WORKING THICKNESS	工作宽度(mm) WORKING WIDTH	总功率(KW) TOTAL POWER	外形尺寸mm(LxWxH) OVERALL SIZE	参考重量(KG) WEIGHT FOR REFERENCE
NDNP21/12	12	10-50	800-2100	80	13885x3200x2150	28000
NDNP21/10	10	10-50	800-2100	69	12285x3200x2150	25000
NDNP16/12	12	10-50	800-1650	80	13885x2700x2150	26000
NDNP16/10	10	10-50	800-1650	69	12285x2700x2150	23000
NDNP12/10	10	10-50	800-1250	69	12285x2300x2150	20000



NDMB系列磨边机

NDMB series squaring and chamfering machine



该设备用于瓷砖、石材规格板、复合板的磨边和倒角，该机设有对中和推板机构，加工精度高，对角线误差小。

It is used for squaring and chamfering of ceramic tile, stone tile and composite tile. The machine is equipped with centering and pushing mechanism, which can process precisely with small diagonal error.



NDFB系列翻板车/NDFM系列侧向翻面机

NDFB series loader/NDFM series side over-turning machine



◀ NDFB系列翻板车 NDFB series loader

该机采用高集成液压升降系统，设有缓冲减震装置，采用电机驱动辊子输送板材，有自动上板、自动下板和电动上下板等多种型号供选择。

It adopts a highly integrated hydraulic lifting system with a cushioning damping device, and uses a motor driven roller to convey the slab. There are various models such as automatic loader, automatic unloader and electric loader and unloader.

NDFM系列侧向翻面机 ▶ NDFM series side over-turning machine

采用圆滚机构，实现板材 180 度翻面功能，翻转平稳，效率高。

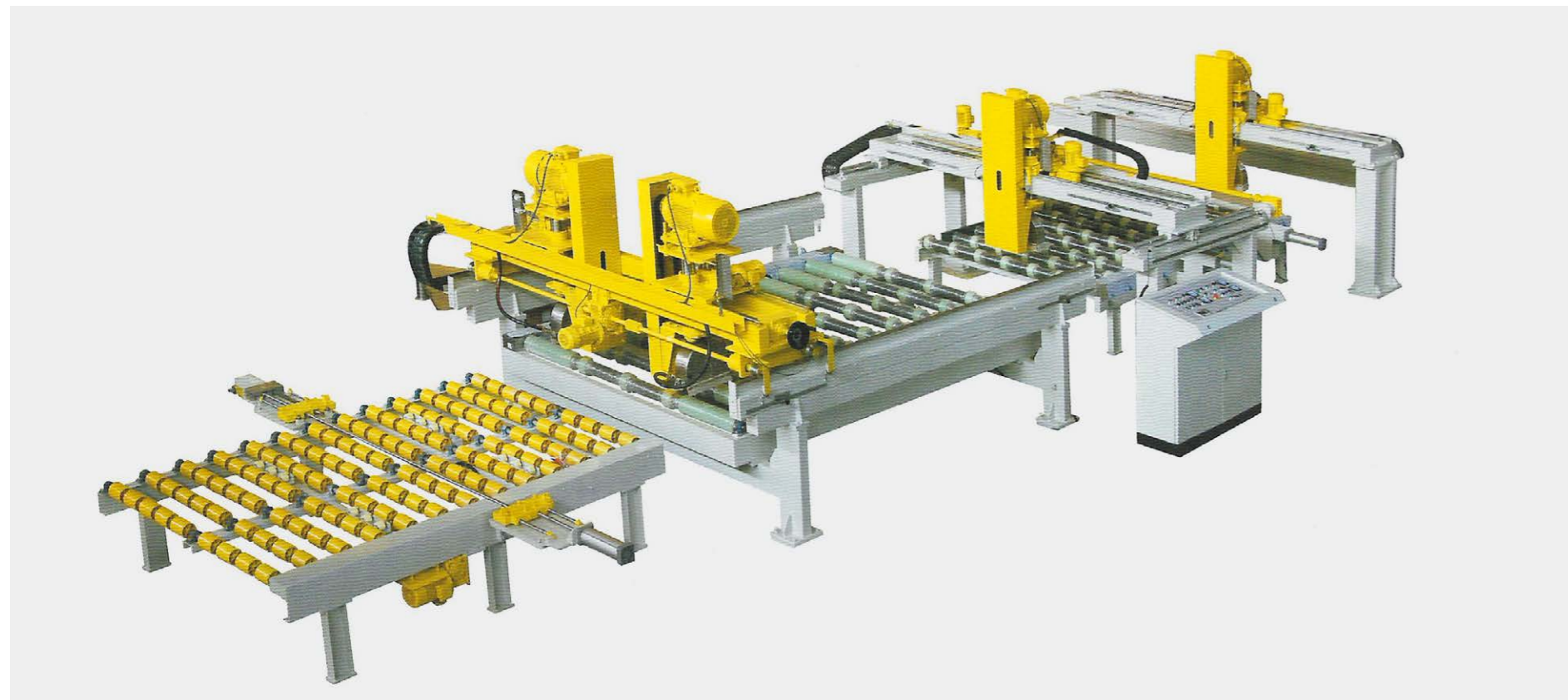
Rolling mechanism is adopted to realize 180 degree turning of slabs smoothly and efficiently.





NDXB系列修边线

NDXB series edge trimming line



- 由一台双刀桥式纵向修边机和一台双刀桥式横向修边机组成，用于板材的长边和短边的在线切割修正，切割效率高；
- 采用同步带进行板材输送，配对中装置，切割精度高，对角线误差小；
- 采用触摸屏操作，切割规格根据参数电动调整，操作便捷，智能化程度高。

- It consists of a double-knife type longitudinal trimming machine and a double-knife type horizontal trimming machine for online cutting the long and short sides of the slab. It cuts with high efficiency.
- The slab is conveyed by the timing belt with centralize device. It cuts precisely with small diagonal error.
- With touch screen , the cutting size are electrically adjusted according to the parameters. The operation is convenient with high intelligence.



金刚石定厚磨条

Diamond calibrating segment

产品用途：主要用于人造石英石、人造岗石、人造无机石、天然大理石和天然花岗石的板材表面的磨削，达到刮平定厚的效果。

产品特点：具有切削力强、锋利度好、寿命极长、有利于后续抛光的特点。

使用范围：应用于石材定厚抛光机。

Usage: Diamond Calibrating Segment is mainly used in calibrating machine of calibrating artificial quartz stone, artificial inorganic stone, artificial granite, natural granite to achieve the designed thickness of smooth and flat effect.

Product features: Nade Diamond Calibrating Segment has characteristics of high sharpness , long working lifetime, high polishing efficiency and low cost, etc.

Range of application: Widely used in all kinds of calibrating machine of quartz stone and artificial marble, etc.



参数说明 Parameter Description

名称 NAME	规格 TYPE	刀头长度(mm) LENGTH	刀头厚度(mm) THICKNESS	粒度(仅供参考) GRIT
金刚石定厚 磨条 DIAMOND CALIBRATING SEGMENT	分段式 SUBSECTION TYPE	24/40	12/20	24#-180#
	马蹄式 FRANKFURT	24/40	12/20	



锯片式焊接圆柱轮

Saw blade welded cylindrical wheel

产品用途:主要用于人造石英石的板材表面的磨削,达到刮平定厚的效果。

产品特点:具有锋利性好、切削效率高、寿命极长、有利于后续抛光的特点。

使用范围:应用于石材定厚抛光机。

Usage: Mainly used for grinding the surface of artificial quartz stone, to achieve the effect of scraping and smoothing the thickness.

Product features: with good sharpness, high cutting efficiency, long service life, it is conducive to polishing characteristics.

Range of application: It is used in stone disc calibrating machine



参数说明 Parameter Description

名称 NAME	外径 OUTER DIAMETER	长度(mm) LENGTH	刀头尺寸(MM) SEGMENT SIZE	粒度 GRIT SIZE
金刚石磨块 DIAMOND FICKERT	Φ184	60	8x10	40# 60# 80# 100#
	Φ200	60		
		40		
	Φ208	60		



石材金刚石磨块

Diamond abrasive

产品用途:适用于全自动抛光线对花岗岩、石英石板材的抛光生产,代替传统的碳化硅磨块,常用于对板材表面的粗中磨。

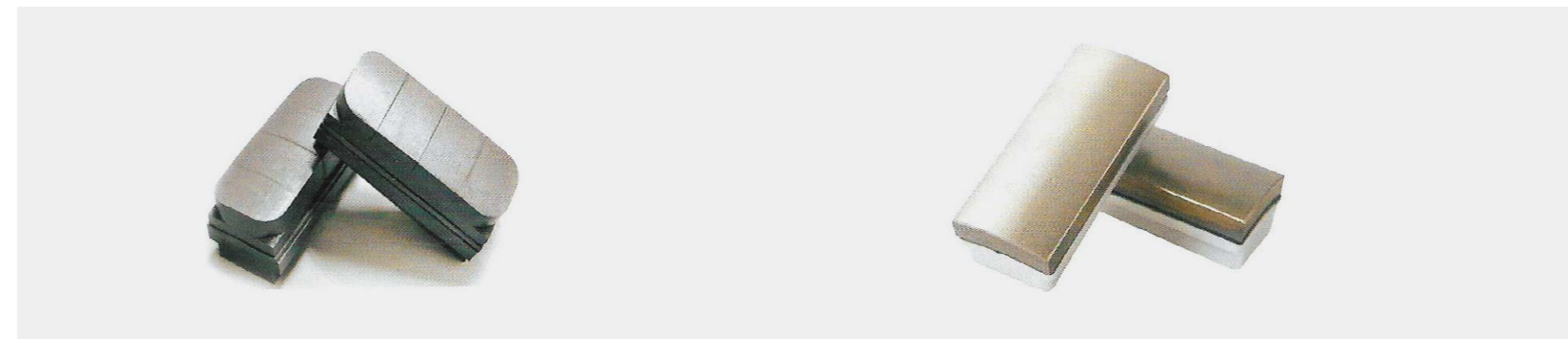
产品特点:独特的原料配方,先进的生产工艺,确保了磨块的切削效率、切削效果,产品具有磨削力强、经济性好、可靠性好等特点。

使用范围:广泛用于各种石材加工机械。

Usage: Diamond abrasive is mainly used to replace traditional magnesium oxide and silicon carbide bond grinding block on tile surface coarse, medium grinding.

Product features: Nade diamond abrasive has unique formula materials and advanced production technology ensure the diamond abrasive has perfect has perfect performance in grinding efficiency, grinding effect, advanced, economical efficiency and reliability.

Range of application: Widely used in all kinds of stone processing machinery



参数说明 Parameter Description

名称 NAME	型号 MODEL	尺寸(MM) DIMENSION	粒度(仅供参考) GRIT SIZE (FOR REFERENCE)	用途 USED FOR
石材金刚石磨块 DIAMOND ABRASIVE	L140(T1)	133X56X17	24#-320#	粗磨、中磨 Rough and medium grinding
	L170(T2)	164X56X17		



树脂磨块

Resin-bond abrasive

产品用途: 主要用于石材表面的进一步细磨、精磨,能够继续提高表面光度。

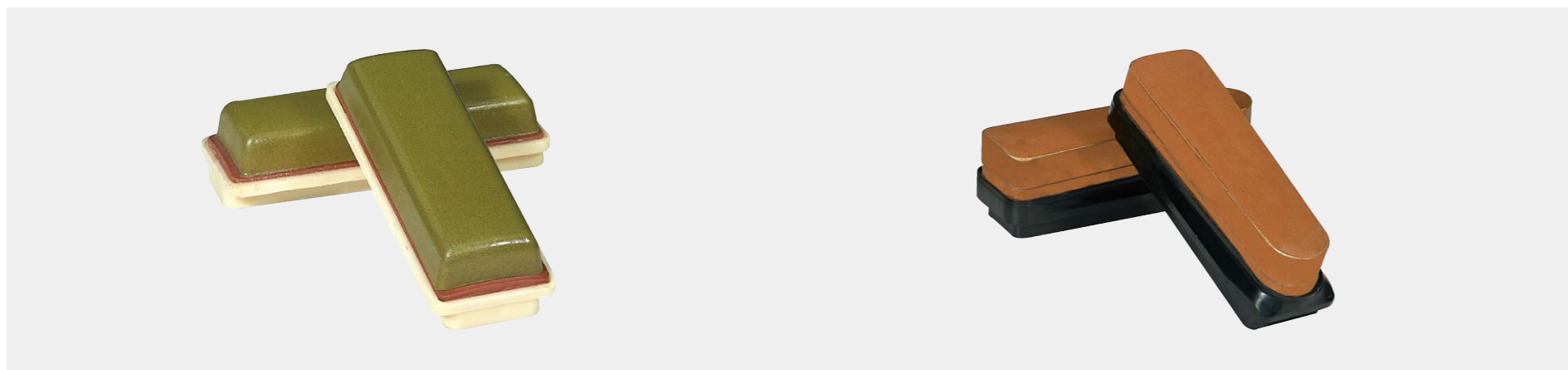
产品特点: 具有磨削效果好,使用寿命长,抛光效果好,综合成本低等特点。

使用范围: 广泛用于各种石材抛光机械。

Usage: Resin -Bond Abrasive is used to make fine and finish grinding in order to improve the gloss on stone surface.

Product features: Nade Resin-Bond Abrasive t has characteristics of excellent grinding and polishing effect, long working lifetime and competitive price and high performance ratio, etc.

Range of application: Widely used in all kinds of stone polishing machinery.



参数说明 Parameter Description

名称 DESCRIPTION	型号 MODEL	尺寸(MM) DIMENSION	粒度 GRIT	用途 USED FOR
树脂磨块 RESIN-BOND FICKERT	L140(T1)	140X60x60	240#-3000#	中磨、细磨 FINE AND PRECISION GRINDING
	L170(T2)	170X70x60	180#-5000#	中磨、细磨 FINE AND PRECISION GRINDING



碳化硅磨块

Silicon carbide abrasive

产品用途: 适用于天然大理石、天然花岗石、人造石英石、人造岗石、人造无机石的表面磨削。

产品特点: 板材光泽度高、板面清晰无模糊、无磨影等特点。

适应范围: 广泛用于各种石材抛光机械。

Usage: Silicon Carbide Abrasive is used for further fine grinding and polishing of slab surface, and can continue to improve surface.

Product features: Nade Silicon Carbide Abrasive has characteristics of luminosity, featuring good grinding effect, long service life, good polishing effect and low comprehensive cost, etc.

Range of application: Widely used in all kinds of stone polishing machinery.



参数说明 Parameter Description

名称 DESCRIPTION	型号 MODEL	尺寸(MM) DIMENSION	粒度 GRIT
碳化硅磨块 SILICON CARBIDE ABRASIVE	T1	128X80x52	36#-2500#
	T2	162X80x52	36#-2500#
	T3	104X104x84x45	36#-1200#



研磨刷

Grinding brush

产品用途: 适用于天然大理石、花岗石、人造石英石、人造岗石、人造无机石等板材的表面哑光处理。

产品特点: 具有切削力强、使用持久、成本低、效率高等特点。

使用用途: 适用于各种石材抛光机上。

Usage: Suitable for surface matte treatment of natural marble, granite, artificial quartz, artificial granite, artificial inorganic slab.

Product features: Nade Grinding Brush has characteristics of excellent grinding effect, long working lifetime and competitive price and high efficiency , etc.

Range of application: Widely used in all kinds of stone polishing machinery.



参数说明 Parameter Description

名称 DESCRIPTION	型号 MODEL	规格 (MM) SPEC	粒度 GRIT
研磨刷 GRINDING BRUSH	T1	140	36#-1500#
	T2	170	36#-1500#
	T3	104	36#-1500#



金刚石排锯

Diamond gang saw

产品用途: 金刚石排锯是目前大理石、啡网、砂岩和人造岗石等石材板材加工中最先进的工具之一。

产品特点: 切削效率高、精度高、板材平整度好等特点。

使用范围: 适用于切割大型荒料、修正大型板材，我们可以根据不同厂家设备的特点、加工对象的类型、加工精度的要求来设计符合客户实际需求的个性化产品。

Usage: Diamond gang saw is one of the most advanced tools for processing slabs of natural marble and artificial marble at present.

Product features: Nade Diamond Gang Saw has characteristics of high efficiency, high precision and good evenness for uniform large slabs, etc.

Range of application: Widely used on cutting rough blocks and processing large slabs, we can design personalized products that meet the actual needs of customers according to the characteristics of different manufacturers' equipment, the types of processing objects and the requirements of processing accuracy.



参数说明 Parameter Description

名称 DESCRIPTION	基体参数 (MM) BLADE PARAMETERS			刀头参数 (MM) SEGMENT PARAMETERS			齿数 NO.OF SEGMENTS
	长 LENGTH	宽 WIDTH	厚 THICKNESS	长 LENGTH	高 WIDTH	厚 THICKNESS	
大理石 MARBLE	3700-4600	180	1.5-3.5	20-38	10-12	3.0-5.0/2.5-4.5	21-31
啡网 EMPARADOR	3800-4600	180	2.0-3.5	50/30	8-8.5	3.5-5.2/3.0-4.7	18-19
砂岩 SAND STONE	3950-4450	180	2.5-3.5	20	8-12	4.2-5.2/3.7-4.7	28-35
人造岗石 ARTIFICIAL MARBLE	3700-4600	180	1.5-3.5	20	8-12	2.6-4.0/2.2-3.5	23-28



超洁亮纳米液

Super clean nano liquid

我司纳米液结合我司的纳米抛光机一起使用，可大幅提高各种板材的光洁度和防污性能，提高板材的附加值。
Our nano-liquid combined with our nano-polishing machine can greatly improve the gloss and antifouling performance of various slabs. This can increase the value of slabs.

浓缩液-NA CONCENTRATE liquid-NA

当板材有比较大得毛孔、针孔时，该产品是用来堵塞大的毛孔。不同粒度大小种类的浓缩液可以满足不同种类的板材表面防污填充的的需求，适用于人造无机石、有机石和各种天然石材。

When the slab has relatively big pores and pinholes, the product is used to plug big pores. Concentrated liquids with different particle sizes can meet the antifouling requirements of different kinds of slab surfaces.

It is suitable for artificial inorganic stone, organic stone and various natural stone.

纳米修复剂-CA Nano-repairing agent-CA

经过磨盘的打磨，在阻塞细小毛孔的同时，能够在表面形成一层靓丽结晶膜，达到持久耐磨及防污的效果，适用于人造无机石、有机石和各种天然石材。

After grinding with disc, it can block small pore and form a beautiful crystalline film on the surface to achieve lasting wear resistance and antifouling effect.

It is suitable for artificial inorganic stone, organic stone and various natural stone.

油性防污剂-YB Oil base antifouling agent-YB

该产品选用烷烃类溶剂为渗透基体，具有超强的渗透力，该溶剂可以带动其内的硅油类防污成份渗透到砖体内部，使防污成份能够与砖体充分的复合复配，从而起到绝佳的防污效果，适用于人造无机石、有机石和各种天然石材。

The product uses alkane solvent as penetration matrix and has super penetration. The solvent can drive the silicone oil antifouling ingredients inside the slab to penetrate into the slab body, so that the antifouling ingredients can be fully compounded with the slab body, thus playing an excellent antifouling effect.

It is suitable for artificial inorganic stone, organic stone and various natural stone.



浓缩液-NA CONCENTRATE liquid-NA

纳米修复剂-CA Nano-repairing agent-CA

油性防污剂-YB Oil base antifouling agent-YB



综合配套服务

Technical support and service

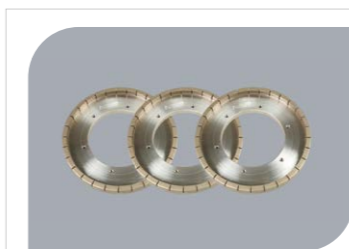


Nade Machinery

纳德 机械装备



Nade 纳德

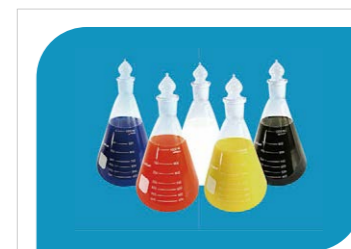


Nade Abrasive And Diamond Tool

纳德 磨块与金刚石制品



Nade 纳德



Nade Nano Liquid

纳德 超洁亮纳米液



Nade 纳德



Nade Technical Support And Service

纳德 综合配套服务



Nade 纳德