

## 广东纳德新材料有限公司

GUANGDONG NADE NEW MATERIAL CO., LTD.

- 商务中心: 广东省佛山市禅城区湖景路 8 号 1 区 37 座 P1 号
- 生产基地: 广东省肇庆市高新区凤岗路 7 号
- 电话: 86-757-8669 9629
- 传真: 86-757-8669 9629
- 邮箱: nade\_marketing@nadenet.com
- 网址: www.nadenet.com

Business address: P1, Building 37, Zone 1, No 8 Hujing Road,  
Chancheng District, Foshan, Guangdong, China.  
Factory address: No.7 Fenggang Road, High-Tech Zone, Zhaoqing city,  
Guangdong, China  
T: 86-757-8669 9629  
F: 86-757-8669 9629  
E: nade\_marketing@nadenet.com  
Web: www.nadenet.com



H5 动态画册



YouTube

# Nade 纳德

## 陶瓷深加工智能装备及综合配套服务

COMPREHENSIVE MANUFACTURER FOR CERAMIC TILE  
POLISHING INTELLIGENT EQUIPMENTS AND CONSUMABLES

www.nadenet.com

智能装备  
Intelligent Machinery

磨块与金刚石制品  
Abrasive And Diamond Product

超洁亮纳米液  
Super Clean Nano  
Liquid

综合配套服务  
Full-Range Technical  
Services



# Nade 纳德

## 关于我们 About Us

每一次的技术创新都源自一线的体验，每一回的攻关都瞄准行业的难点。在智能化、数字化、高效节能、集中排水以及绿色生产方面优势明显。

Every technological innovation all come from the frontline experience, and every tackling problem is aimed at the difficulties of the industry. It has obvious advantages in polishing precision, high efficiency and energy saving, centralized drainage and green production.

### 一、综合配套实力

纳德创建于2005年，是一家能同时提供陶瓷抛光整线装备、磨块与金刚石制品、超洁亮纳米化工材料及综合承包服务的企业。

#### ➤ I、Comprehensive Supporting

Founded in 2005, Nade is an enterprise that can provide ceramic polishing complete line equipment, abrasive blocks and diamond products, super clean nano chemical material and comprehensive contracting services at the same time.

### 二、专业认知、源自一线

依据十数年在海内外200多条抛光整线的承包生产经历，对意大利各种品牌抛光线进行了长期、深度的分析和考察，对标欧洲标准制定纳德陶瓷抛光线的智能制造要求；控制系统符合国家GB5226.1-2008机械电气安全标准、国际电工组织IEC60204-1:2005电气安全标准以及欧盟CE认证标准。

#### ➤ II、Professional Knowledge

Based on more than ten years of contracting production experience for more than 200 complete polishing lines at home and abroad, we have conducted long-term and in-depth analysis and inspection of various Italian brand polishing lines, and integrated European standards into the development of big slab polishing line; The control system conforms to the national GB5226.1-2008 mandatory standard, IEC60204-1:2005 electrical safety standard and the EU CE certification standard.



Nade



YouTube

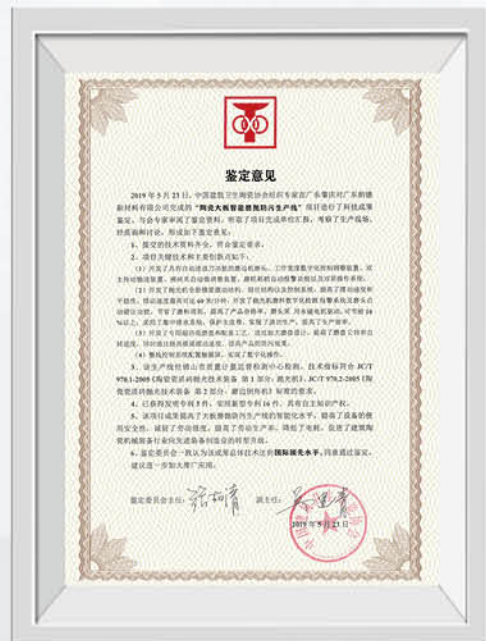
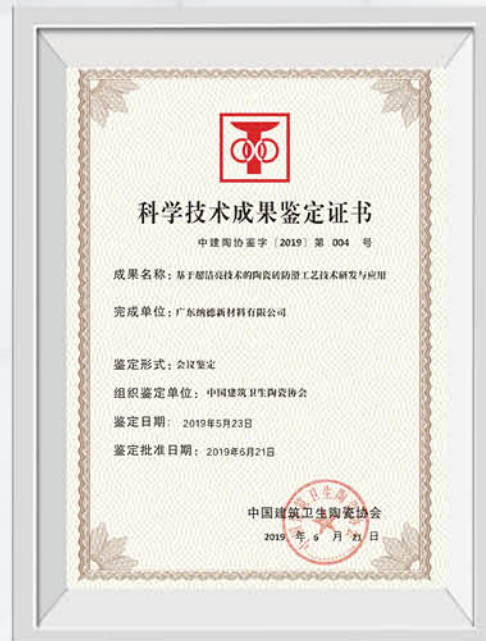
**200** 多条 抛光整线的承包生产经历  
Contracted production experience of more than 200 complete polishing lines

始创 SINCE  
**2005**

INTERNATIONAL  
ADVANCED  
AND INDUSTRY INITIATED  
国际领先 行业首创



**Nade 纳德**  
您的标准 纳德智造



# Nade 纳德 现代工业设计

Modern Industrial Style



高效  
High  
Efficiency



防腐  
Anticorrosion



智能  
High  
Intelligence



外观设计简洁明快，凸现代工业风格，专业的高防腐外观涂装工艺，安全防护装置配套齐全。

The appearance design is simple and bright, highlighting the modern industrial style, professional high-anticorrosion appearance coating technology, and complete safety protection devices.

# CONTENTS 目录



智能装备  
Intelligent Machinery

03-05	陶瓷岩板深加工工艺布置 Finishing Process Layout For Sintered Slab
06-10	NDPGZ 系列智能抛光机 NDPGZ Series Intelligent Sintered Slab Polishing Machine
11-12	NDXP 系列固定式超洁亮抛光机 NDXP Series Fix-Head Intelligent Super Shine Nano Polishing Machine
13-14	NDXP 系列摆动式超洁亮抛光机 NDXP Series Swing Type Super Shine Nano Polishing Machine
15-18	NMBZ 系列智能磨边倒角机 NMBZ Series Intelligent CNC Sintered Slab Squaring And Chamfering Machine
19-20	NMB 系列通用型磨边倒角机 NMB Series Common Squaring And Chamfering Machine
21	NDXX 系列岩板打蜡机 NDXX Series Sintered Slab Waxing Machine
22	NDZXL/D 系列岩板直角升降转向辊台 NDZXL/D Series Sintered Slab Rectangular Lifting & Steering Roller Table
23	NDPS 系列岩板平整度 - 尺码检测一体机 NDPS Series Sintered Slab Flatness & Size Inspection Machine
24	NDTM 系列岩板贴膜机 NDTM Series Sintered Slab Film Laminator
25	NDFJ 系列吸水风干辊台 NDFJ Series Water Squeeze Blower Roller Table
26	NDXX 系列吸盘式上下板机 NDXX Series Cup Suction Type Loading And Unloading Machine
27-32	纳德远程数字化陶瓷磨抛防污智能制造系统 NADE Remote Digital Intelligent Control System Of Ceramic Polishing And Antifouling



磨块与金刚石制品  
Abrasive And Diamond Product

33	弹性磨块 Lappato Abrasive
34	水磨系列 Wet Squaring Series
35	干磨系列 Dry Squaring Series
36	金刚石磨块 Diamond Abrasive
36	碳化硅磨块 Silicon Carbide Abrasive
36	研磨刷 Brush
37	树脂金刚石磨块 Resin Diamond Abrasive
38	纤维磨块 Fiber Abrasive
38	金刚石滚刀 Diamond Roller



超洁亮纳米液  
Super Clean Nano Liquid

39-40	超洁亮陶瓷纳米液 -A Super Clean Nano Liquid-A
41	陶瓷防污剂 -B Ceramic Antifouling Agent-B
41-42	特色产品 Special Products



综合配套服务  
Full-Range Technical Services

43-44	纳德全球市场分布 NADE Global Markets
-------	---------------------------------

# 陶瓷岩板深加工工艺布置

FINISHING PROCESS LAYOUT FOR  
SINTERED SLAB



Nade



YouTube

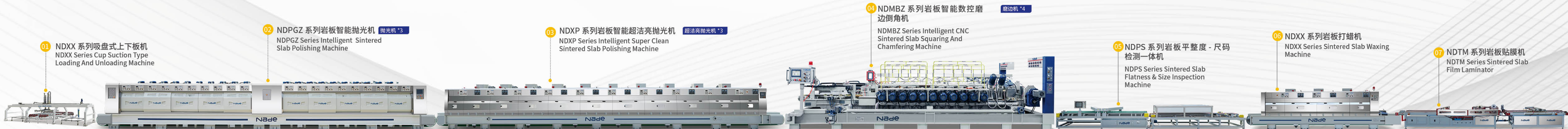
适用于 750×1500、800×2600、900×1800、1200×2400、1200×2700、1600×3200、1600×3600、1800×3600 等岩板的高光抛、柔光抛、亚光抛、底面抛、磨边及纳米超洁亮加工工艺要求。

Suitable for high gloss polishing, soft gloss polishing, matte polishing, bottom polishing, squaring and nano super clean processing technology requirements of size 750×1500, 800×2600, 900×1800, 1200×2400, 1200×2700, 1600×3200, 1600×3600, 1800×3600, etc.

## 主要技术指标

Main Technology Parameters

工作宽度 (mm)	Working Width(mm)	800-1800
工作面高度 (mm)	Height of Working Surface(mm)	820±30
工作厚度 (mm)	Working Thickness(mm)	3-30
耗水量约 (L/min)	Water Consumption(L/min)	3300-5500
外形长度约 (m)	Total Length(m)	330-450
总功率 (kw)	Total Power (kw)	2600-3000
总重量约 (kg)	Total Weight (kg)	300000-350000
电力制度	Power System	380V, 50Hz
压缩空气压力 (MPa)	Compressed Air Pressure(MPa)	≥ 0.6
进砖方向	Input Direction	根据用户实际工艺布置确定 According to the practical application



# NDPGZ 系列 智能抛光机

NDPGZ Series Sintered Slab  
Intelligent Polishing Machine

适用于陶瓷岩板和陶瓷抛釉砖的表面抛磨加工。  
Suitable for surface polishing of Sintered Slab and ceramic.



Nade



YouTube



## 产品参数: PRODUCT PARAMETER

类型和型号 Model	尺寸 Size (LXWXH) (mm)	重量 Weight (kg)
NDPGZ1200/20	17599x2350x2260	36000
NDPGZ1600/20	17599x2750x2260	41000
NDPGZ1800/20	17599x2950x2260	44000
NDPGZ1200/16	12633x3209x2405	28580
NDPGZ1600/16	13155x3609x2405	30500
NDPGZ1800/16	13155x3609x2405	32500



01 配置触摸显示屏, 可实时调整机器的工作参数及监视机器的工作状态。  
Equipped with a touch screen, which can adjust the working parameters of the machine and monitor the working status of the machine in real time.

## 设备特点: FEATURES

- 02 选用专用平皮带输送, 排渣彻底、防震性能好、破损率低, 更加适合薄岩板抛光。  
Equipped with special belt, good shockproof performance, low breakage rate, more suitable for thin plate processing.
- 03 主机数据、操作界面可以远程同步到上位机, 实现远程监控和管理。  
The data and operation interface can be remotely synchronized to the host computer to realize remote digital monitoring and management.

- 04 配置防咬手保护装置。  
Equipped with safety protection devices.
- 05 主动滚筒包胶处理。  
Main drive roller with coating treatment.
- 06 电气控制具备漏电保护功能。  
Electrical control with leakage protection function.



- 07 采用弧形橡胶水管。  
Arc-shaped rubber water pipes
- 08 配YE3节能电机, 转速稳定, 可节能8%以上。  
The polishing head can be equipped with YE-3 energy-saving motor with stable rotation speed and at least 8% energy saving.
- 09 配备电子尺磨料检测系统, 具有磨块磨损提醒功能。配置双气缸磨头自动升降机构。  
Equipped with electrical sensor detecting the consumption of abrasives, automatically alarming for abrasive replacement. Equipped with double cylinder polishing head automatic lifting mechanism.

# NDPGZ 系列 智能抛光机

NDPGZ Series Sintered Slab  
Intelligent Polishing Machine

适用于陶瓷岩板和陶瓷抛釉砖的表面抛磨加工。  
Suitable for surface polishing of Sintered Slab and ceramic.



Nade



YouTube

## 产品参数： PRODUCT PARAMETER

类型和型号 Model	尺寸 Size (LXWXH) (mm)	重量 Weight (kg)
NDPGZ800/20	15895x1836x2275	31000
NDPGZ800/16	12232x1836x2275	24000
NDPGZ1000/20	15895x2036x2275	33000
NDPGZ1000/16	12232x2036x2275	25000



## 设备特点： FEATURES



10 加厚机架和底板，全新横梁摆动结构设计，横梁采用平行斜齿减速机驱动，摆动速度快，整机运行平稳，抛光效率高。

More thickness frame, beam and base plate, high accuracy reducers for the beam, the shaft connecting with double keys, machine swing runs smoothly and the machine works lifetime is long.



11 采用纳德专用磨头 (ND268D)，可安装 T1 (L=140mm) 或 T2 (L=170mm) 磨料，效率高，更省磨料。

Dopt Nade special polishing head (ND268D), can be installed T1 (L=140mm) or T2 (L=170mm) abrasive, high efficiency, abrasive saving.



12 配置 PLC 智能控制系统，设有碎砖确认自动避让、缺砖叠砖保护等功能。

Controlled by PLC smart program, with a function once detected and confirmed there is broken tile, gap, or overlapped, the polishing head will automatic rising one after another.



13 输送平台铺设陶瓷耐磨垫板，配置机架集中排水装置，循环水可直接导流至排水沟。

The conveying platform is laid with ceramic wear-resisting pad and equipped with rack centralized drainage device. The circulating water can be directly diverted to the drainage ditch.

# NDXP 系列 固定式超洁亮抛光机

NDXP Series Fix-Head Intelligent Super Shine Nano Polishing Machine

适用于陶瓷岩板和抛釉砖的表面上光、防污抗菌等加工。  
Suitable for surface glazing, antifouling and antibacterial processing of ceramic and Sintered Slab.



Nade



YouTube

## 产品参数： PRODUCT PARAMETER

类型和型号 Model	尺寸 Size (LXWXH) (mm)	重量 Weight (kg)
ND7P600/12	13460x2548x2200	14500
ND7P800/8	13270x2748x2200	14000
ND7P800/10	13458x2748x2200	15800
ND7P800/12	15660x2748x2200	17800
ND7P1000/10	15860x2948x2200	17500
ND7P1000/12	18460x2948x2200	19500
ND7P1200/9	14337x2000x2400	19000
ND7P1200/10	15500x2000x2400	25000
ND7P1600/5	12500x2500x2200	19000
ND7P1600/6	14400x2948x2400	22000
ND7P1600/7	16300x2948x2400	25000
ND7P1600/8	18200x2948x2400	28000

## 设备特点： FEATURES



01 配纳米液自动滴蜡装置和自动供液系统，智能化程度高，可将纳米液的损耗控制在最佳状态。  
With nano-liquid automatic wax dropping device and automatic liquid supply system, the intelligent degree is high, and the loss of nano-liquid can be controlled in the best state.



02 采用 3kW 电机抛光磨盘，配备磨头小电机故障报警及自动升降功能。  
Adopt Nade 3kW motor polishing grinding disc, equipped with polishing head small motor fault alarm and automatic lifting function.

03 主机数据、操作界面可以远程同步到上位机，实现远程监控和管理。  
The data and operation interface can be remotely synchronized to the host computer to realize remote digital monitoring and management.

04 配置塔式除尘系统，满足清洁生产的要求。  
Tower dedusting system can realize Cleaner Production.

05 配 YE3 节能电机，转速稳定，可节能 8% 以上。  
The polishing head can be equipped with YE-3 energy-saving motor with stable rotation speed and at least 8% energy saving.





# NDXP 系列 摆动式超洁亮抛光机

NDXP Series Swing Type Super Shine Nano Polishing Machine

适用于陶瓷岩板的表面上光、防污抗菌等加工。  
Suitable for surface glazing, antifouling and antibacterial processing of Sintered Slab.



Nade



YouTube

## 产品参数： PRODUCT PARAMETER

类型和型号 Model	尺寸 Size (LXWXH) (mm)	重量 Weight (kg)
ND9P1600/9	14337x2500x2400	21000
ND9P1800/9	14337x2700x2400	23000
ND9P1600/10	15500x2500x2400	28000
ND9P1800/10	15500x2700x2400	32000



## 设备特点： FEATURES



01 具备模块消耗自动补偿功能，系统可根据纤维模块消耗程度及时自动补偿精确控制磨盘抛光压力。

With automatic module consumption compensation function, the system can automatically compensate and accurately control the grinding disc polishing pressure according to the fiber module consumption degree in time.



02 9P 系列横梁采用平行斜齿减速机驱动，摆动速度快，整机运行平稳，抛光效率高。

9P series beam is driven by parallel helical gear reducer, which has fast swing speed, smooth operation and high polishing efficiency.



03 可选配 YE3 节能电机，转速稳定，可节能 8% 以上。

The polishing head can be equipped with YE-3 energy-saving motor with stable rotation speed and at least 8% energy saving.



04 配纳米液自动滴蜡装置和自动供液系统，智能化程度高，可将纳米液的损耗控制在最佳状态。

With nano-liquid automatic wax dropping device and automatic liquid supply system, the intelligent degree is high, and the loss of nano-liquid can be controlled in the best state.



05 选用专用平皮带输送，防震性能好、破损率低，更加适合薄板加工。

Equipped with special flat belt, good shockproof performance, low breakage rate, more suitable for thin plate processing.

06 出口配输送带清洗装置。  
Export with conveyor belt cleaning device.

07 主动滚筒包胶处理。  
Main drive roller with coating treatment.

08 电气控制具备漏电保护功能。  
Electrical control with leakage protection function.

09 配备齿轮结构磨盘，工作稳定维护简单。  
Equipped with gear-type polishing head, stable working and easy maintenance.

# NDMBZ 系列 智能磨边倒角机

NDMBZ Series Intelligent CNC Sintered Slab Squaring And Chamfering Machine

适用于陶瓷岩板和抛釉砖的周边磨削加工。  
Suitable for the peripheral grinding of ceramic and Sintered Slab.



Nade



YouTube



★ 配置对中装置。  
Equipped with centering device.



★ NDMBZH 系列机型采用伺服推砖系统，可选配对角线自动调整装置。  
NDMBZH series machine using brick pushing system and diagonal automatic adjustment device is optional.



## 设备特点: FEATURES

- 01 磨边头选配 YE3 节能电机，数字电流表显示工作电流。  
The squaring head can be equipped with YE-3 energy-saving motor and the digital ammeter shows the working current.
- 02 配置防咬手保护装置。  
Equipped with anti-bite hand protection device.
- 03 配置脚踏板及安全防护装置。  
Equipped with foot pedal and safety protection device.
- 04 主机数据、操作界面可以远程同步到上位机，实现远程监控和管理。  
The data and operation interface can be remotely synchronized to the host computer to realize remote digital monitoring and management.
- 05 电气控制具备漏电保护功能。  
Electrical control with leakage protection function.

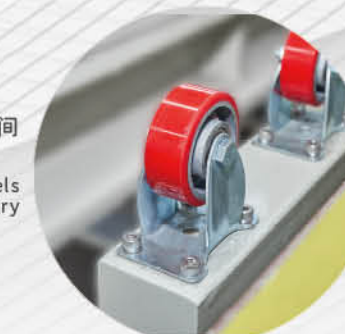
## 产品参数: PRODUCT PARAMETER

类型和型号 Model (前) (Front)	尺寸 Size (LXWXH) (mm)	重量 Weight (kg)
NDMBZQ1200/26+4+2	7795x2900x2010	11700
NDMBZQ1200/30+2	7215x2900x2050	10800
NDMBZQ1400/22+4+2	8100x3060x2010	13200
NDMBZQ1400/26+2	8100x3060x2010	13200
NDMBZQ1400/26+4+2	8680x3060x2010	14200
NDMBZQ1400/30+2	8680x3060x2010	14200
NDMBZQ1600/22+4 + 2	8680x3260x2010	13500
NDMBZQ1600/26+2	8680x3260x2010	13500
NDMBZQ1600/26+4+2	9260x3260x2010	15000
NDMBZQ1600/30+2	9260x3260x2010	15000
NDMBZQ1800/26+2	8680x3460x2010	14000
NDMBZQ1800/22+4 + 2	8680x3460x2010	14500
NDMBZQ1800/26+4+2	9260x3460x2010	16000



06 采用 PLC 控制、触摸屏操作系统，整机操控更便捷。  
Equipped with PLC control and touch screen operating system, the machine is more convenient to operate.

07 NDMBZ1600 以上机型配置中间辅助支撑滚轮装置。  
NDMBZ1600 and above models equipped with middle auxiliary support roller device;



# NDMBZ 系列

## 智能磨边倒角机

### NDMBZ Series Intelligent CNC Sintered Slab Squaring And Chamfering Machine

适用于陶瓷岩板和抛釉砖的周边磨削加工。  
Suitable for the peripheral grinding of ceramic and Sintered Slab.



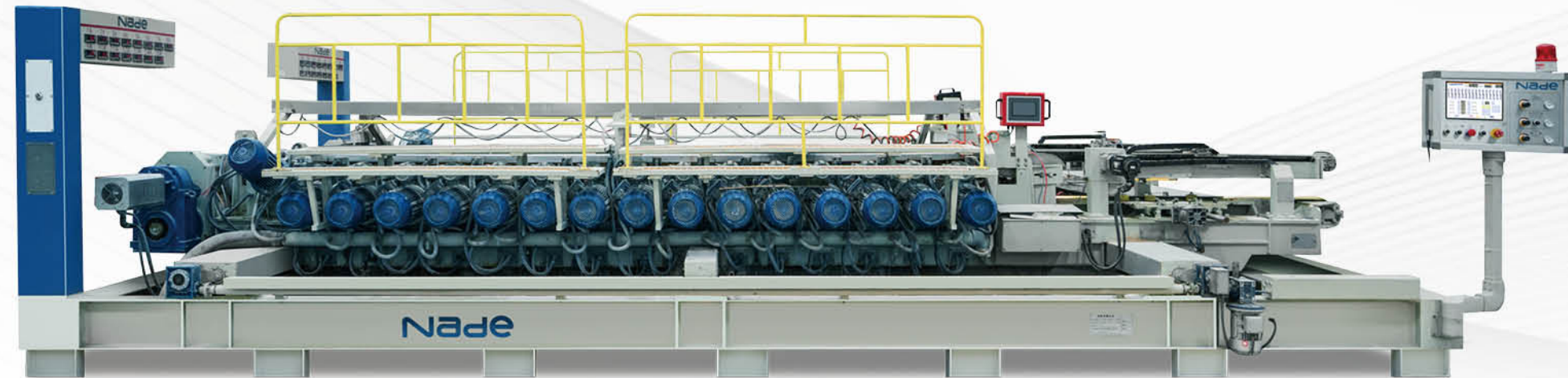
Nade



YouTube

#### 产品参数: PRODUCT PARAMETER

类型和型号 Model (后) (Back)	尺寸 Size (LXWXH) (mm)	重量 Weight (kg)
NDMBZH1200/22+4+2	7215x2900x2050	11100
NDMBZH1200/26+2	7795x2900x2050	11700
NDMBZH1200/26+4+2	7795x2900x2050	12000
NDMBZH1200/30+2	7215x2900x2050	11100
NDMBZH1800/22+4+2	7215x3550x2050	11800
NDMBZH1800/26+2	7795x2900x2050	12000
NDMBZH1800/26+4+2	7795x3550x2050	12700
NDMBZH1800/30+2	7215x3550x2050	11800
NDMBZH2800/22+4+2	7530x4460x2010	15000
NDMBZH2800/26+2	7530x4460x2010	15000
NDMBZH2800/26+4+2	8110x4460x2010	16000
NDMBZH2800/30+2	8110x4460x2010	16000
NDMBZH3600/22+4+2	7530x5260x2010	16500
NDMBZH3600/26+2	7530x5260x2010	16500
NDMBZH3600/26+4+2	8110x5260x2010	18000
NDMBZH3600/30+2	8110x5260x2010	18000



#### 设备特点: FEATURES

08 具备磨轮耗尽提前预警功能和自动退刀功能，磨轮更换更方便。  
With the function of early warning of grinding wheel exhaustion and automatic retreating tool, it is more convenient to replace the grinding wheel.



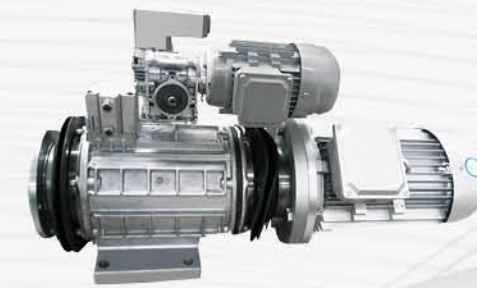
09 配置自动调宽装置。  
Equipped with automatic width adjusting device.



10 主传动：双压带式结构，同步齿形带输送，上带 100mm，下带 150mm，皮带托槽铺设陶瓷耐磨垫板，可选配双伺服电机同步驱动。  
Main drive: double pressure belt structure, synchronous tooth belt conveying, upper belt 100mm, lower belt 150mm, belt bracket laid ceramic wear-resisting plate, optional dual servo motor synchronous drive;



11 配置集中排水水槽，循环水可直接导流到排水沟。  
Equip with centralized drainage tank, the circulating water can be directly diverted to the drainage ditch.



12 配置 ND520H.00 电动磨边总成，可根据磨轮消耗程度动态自动调节进给量，可选配固定倒角总成 (5.5KW、4KW)、气动倒角总成 (1.5KW) 及下倒角总成 (4KW) 等。  
Equipped with ND520H.00 electric edging assembly, can dynamically adjust the feed according to the grinding wheel consumption degree, can choose fixed chamfer assembly (5.5KW, 4KW), pneumatic chamfer assembly (1.5KW) and lower chamfer assembly (4KW), etc.



# NDMB 系列

## 通用型磨边倒角机

### NDMB Series Common Squaring And Chamfering Machine

适用于陶瓷岩板和抛釉砖的周边磨削加工。  
Suitable for the peripheral grinding of ceramic and Sintered Slab.



Nade



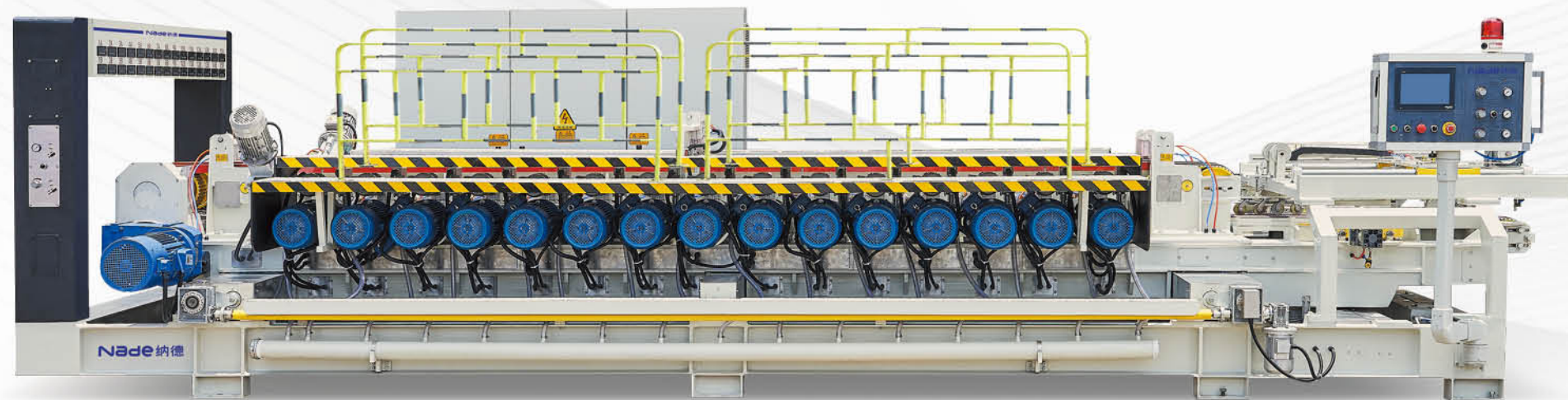
YouTube



★ 控制电柜  
Electric control cabinet



★ 磨边头总成  
Squaring head



### 设备特点: FEATURES

- 01 加重型机架和横梁设计, 整机运行更稳定。  
More Stronger frame and beam design to ensure more stable operation of the whole machine.
- 02 采用上下压带式结构, 能有效防止砖坏在磨削过程中出现偏转, 错位, 可选配 200-250 磨边轮, 电耗低, 磨削效果更好。  
Adopt the upper and lower pressure belt structure, can effectively prevent the tiles in the process of squaring deflection, dislocation, can be selected with  $\Phi 200-250$ mm diamond squaring wheels, low power consumption, better sizing effect.
- 03 设有对中机构和同步变频推砖机构, 有效减少对角线、大小头等误差, 尺寸控制精度高。  
It is equipped with centering mechanism and synchronous frequency conversion tiles pushing mechanism, which can effectively reduce the errors of diagonal line and size and have high dimensional control accuracy.
- 04 配置自动调宽装置, 换产更方便, 自动化程度高。  
Equipped with automatic width adjustment device, it is more convenient to change production with high automation.
- 05 采用大尺寸触摸屏, 参数调整更便捷。  
Large touch screen, convenient parameter adjustment.
- 06 主传动可选配双伺服电机驱动、无同步轴设计, 更换皮带更方便。  
The main drive can be equipped with dual servo motor drive, no synchronous shaft design, more convenient to replace the belt.
- 07 可选配远程故障诊断系统, 运行维护更方便。  
Remote fault diagnosis system can be selected for convenient operation and maintenance.

### 产品参数: PRODUCT PARAMETER

类型和型号 Model (前、后) (Front、Back)	尺寸 Size (LXWXH) (mm)	重量 Weight (kg)
NDMB1200/24+4	5100x2600x1680	6700
NDMB1200/40+4	5920x2600x1680	7200
NDMB1200/48+4	6500x2600x1680	8400
NDMB1200/52+4	6790x2600x1680	8800
NDMB1200/60+4	7100x2600x1680	9200
NDMB1800/40+4	6210x2600x1680	7800
NDMB1800/48+4	6790x2600x1680	9500
NDMB1800/52+4	7080x2600x1680	10300
NDMB1800/60+4	7390x2600x1680	10500
NDMB2400/48+4	7080x2600x1680	9700
NDMB2400/52+4	7370x2600x1680	10400
NDMB2400/60+4	7680x2600x1680	10700



智能装备  
Intelligent Machinery

# NDXX 系列 岩板打蜡机

NDXX Series Sintered Slab  
Waxing Machine

适用于陶瓷岩板的表面防护打蜡加工。  
Suitable for the surface protection and wax  
processing of Sintered Slab.

## 产品参数: PRODUCT PARAMETER

类型和型号 Model	尺寸 Size (LXWXH) (mm)	重量 Weight (kg)
ND5L1600/4	9010x2300x2400	5200
ND7P1200/3	7410x2000x2200	7000
ND7P1200/4	8910x2000x2200	8000
ND7P1600/4	8910x2400x2200	9500
ND7P1800/4	8910x2600x2200	10500



## 设备特点: FEATURES

01 可选配 YE3 节能电机，转速稳定，可节能 8% 以上。

The polishing head can be equipped with YE-3 energy-saving motor with stable rotation speed and at least 8% energy saving.

02 电气控制具备漏电保护功能。

Electrical control with leakage protection function.

03 采用纳德小电机打蜡磨盘，产量、质量俱佳。

Equipped with Nade small motor waxing mill, good production quality.

04 配蜡液自动滴蜡装置和自动供液系统，智能化程度高，可将蜡液的损耗控制在最佳状态。

Equipped with automatic wax dropping device and automatic liquid supply system, it is highly intelligent, which can minimize the loss of wax liquid.



# NDZXL/D 系列 岩板直角升降转向辊台

NDZXL/D Series Sintered Slab Rectangular  
Lifting & Steering Roller Table

适用于陶瓷岩板的直角转向输送工序。  
Suitable for Right Angle steering conveying  
process of Sintered Slab.

01 四杆升降机构，采用 4 条 PVC 平皮带输送，带轮配置防咬手保护。

Four rod lifting mechanism, using four PVC flat belt conveying, the belt wheel is equipped with anti-bite hand protection.

02 采用尼龙实行棍棒输送，输送轴镀铬处理，斜齿传动结构。

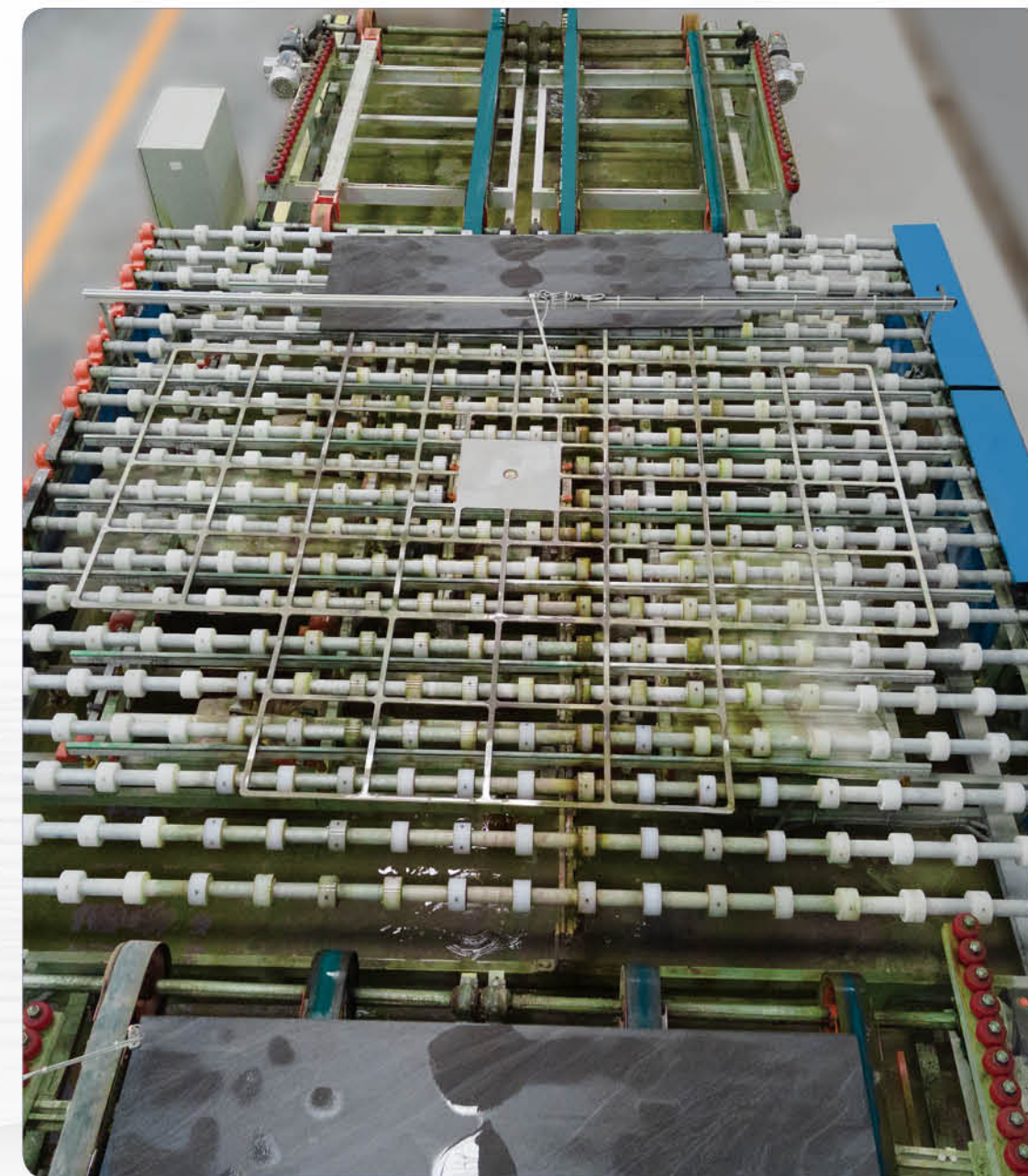
Adopt nylon to carry out rod conveying, conveying shaft plating processing, helical gear transmission structure.

03 配备进口分割器。

Equipped with import divider.

04 整机自动化程度高，自动运行连锁，无人值守设计。

High degree of automation, automatic operation chain, unattended design.



# NDPS系列 岩板平整度 - 尺码检测一体机

## NDPS Series Sintered Slab Flatness & Size Inspection Machine

适用于陶瓷岩板加工误差的检测及反馈。  
Suitable for the detection and feedback of machining error of Sintered Slab.

### 产品参数: PRODUCT PARAMETER

类型和型号 Model	尺寸 Size (LXWXH) (mm)	重量 Weight (kg)
NDPS1200/2800	10000x1950x1550	1300
NDPS1600/3600	12000x2150x1550	1500
NDPS1800/3600	14100x2350x1550	1700



### 设备特点: FEATURES



01 大屏幕高清晰液晶显示, 可显示多种检测控制数据。  
Large screen high-definition liquid crystal display, can display a variety of detection and control data.



02 可选配智能语音播放系统, 标配划笔记号标识装置。  
It can be equipped with intelligent voice playback system and standard marking device with note number.

03 主机采用专用工控机控制。  
The main machine is controlled by special industrial computer.

04 扫描及传输采用伺服系统驱动。  
Scanning and transmission are driven by servo system.

05 平整度检测精度  $\leq 0.08\text{mm}$ , 尺寸检测精度  $\leq 0.08\text{mm}$ 。  
Flatness detection accuracy  $\leq 0.08\text{mm}$ , size detection accuracy  $\leq 0.08\text{mm}$ .

06 检测速度  $\geq 40$  米 / 分钟。  
Detection speed  $\geq 40\text{m/min}$ .

07 主机数据远程同步到上位机, 实现远程监控和管理。  
The data can be remotely synchronized to the host computer to realize remote digital monitoring and management.

# NDTM系列 岩板贴膜机

## NDTM Series Sintered Slab Film Laminator

适用于陶瓷岩板包装前的贴膜工序。  
Suitable for the coating process of Sintered Slab before packaging.

### 产品参数: PRODUCT PARAMETER

类型和型号 Model	尺寸 Size (LXWXH) (mm)	重量 Weight (kg)
NDTM1200	8400x1600x1200	2500
NDTM1600	11000x2200x1200	3000
NDTM1800	11000x2400x1220	3500



### 设备特点: FEATURES



01 入砖段采用 2 条环形同步带输送, 机架上装有气动岩板对中装置, 齿轮减速机驱动, 变频调速。  
The brick entry section adopts two annular synchronous belt conveying, the frame is equipped with pneumatic tile centering device, gear reducer drive, frequency conversion speed regulation.



02 贴膜段采用齿轮减速机驱动, 伺服电机驱动定位。  
The film section is driven by a gear reducer and driven by a servo motor.



03 配置自动贴膜和切膜系统一套, 可选配除静电装置。  
Equipped with a set of automatic film sticking and film cutting system, optional electrostatic device.



04 配置岩板挡轮自动导正装置和对中装置。  
Equipped with gear automatic alignment device and centering device.

05 电气控制具备漏电保护功能。  
Electrical control with leakage protection function.

# NDFJ 系列

## 吸水风干辊台

NDFJ Series Water Squeeze Blower Roller Table

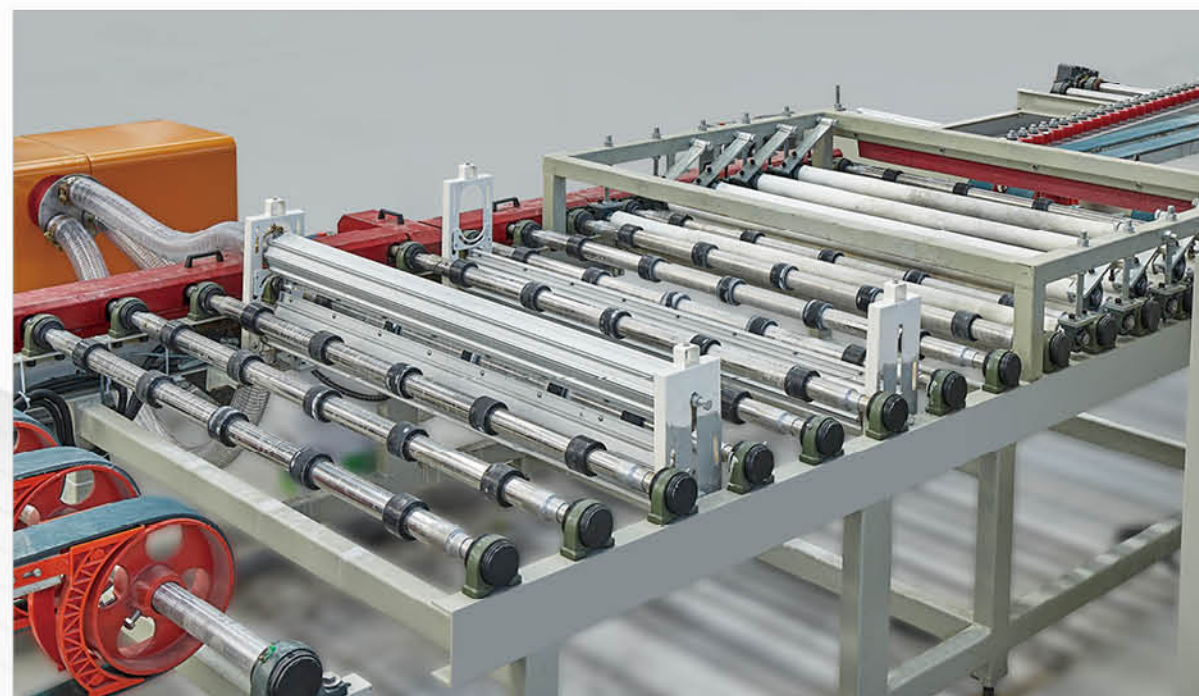


### 设备特点: FEATURES

- 01 斜齿轮传动，齿轮减速机驱动。  
Adopt gear reducer which are helical gearing.
- 02 配置 9 支吸水棍棒，分上下两排，上面 4 支下面 5 支。  
Equipped with 9 absorbent sticks, divided into two rows, 4 on the top and 5 on the bottom.

### 产品参数: PRODUCT PARAMETER

类型和型号 Model	总长 (mm) Length	重量 (kg) Weight
NDFJ1000/3	3000	450
NDFJ1200/3	3000	800
NDFJ1600/3	3000	500
NDFJ1600/4	4000	900
NDFJ1800/4	4000	1000



- 03 水平输送辊棒套有耐磨胶套，距离可调。  
The horizontal conveying roller is equipped with wear-resistant rubber sleeve, and the distance is adjustable.
- 04 配置 7 组吹风系统，风机配隔音罩。  
Equip with 7 Blowing system, and cover with Blimp.
- 05 配置拉绳开关，电气控制具备漏电保护功能。  
Equip with pull cord switch and the electrical control with leakage protection function.

# NDXX 系列

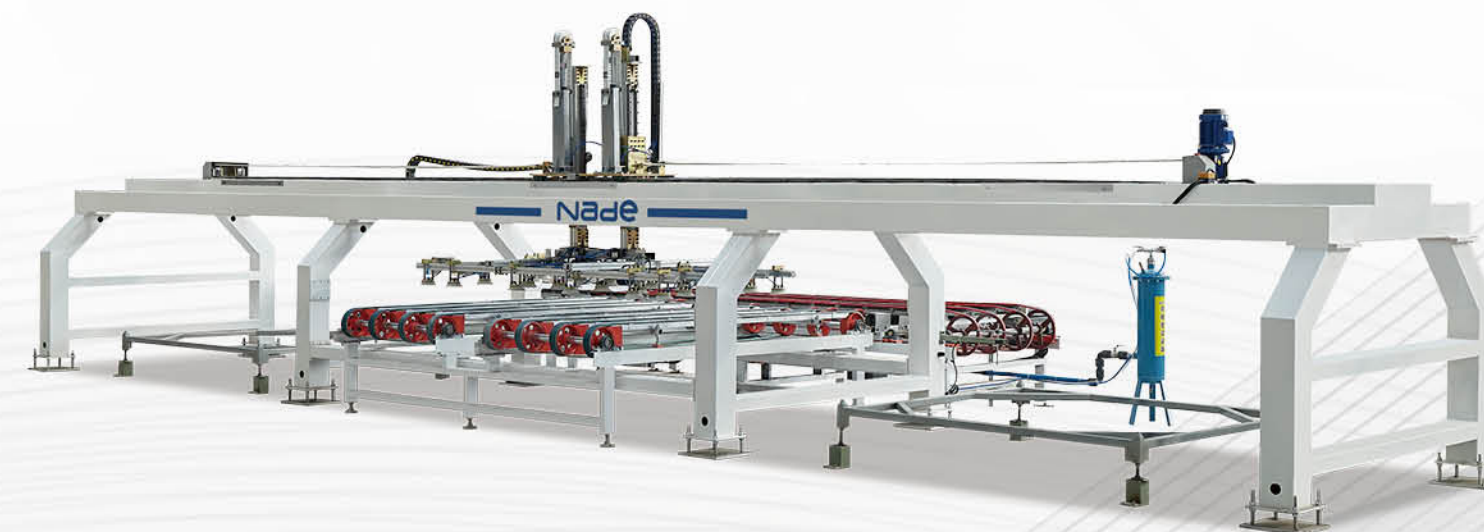
## 吸盘式上下板机

NDXX Series Cup Suction Type Loading And Unloading Machine

适用于陶瓷岩板的上下板输送工序。  
Suitable for the plate conveying of Sintered Stone.

### 产品参数: PRODUCT PARAMETER

类型和型号 Model	尺寸 Size (LXWXH) (mm)	重量 Weight (kg)
NDXX2800/1200	4200x4500x4500	3000
NDXX3600/1600	5070x5550x4500	3500
NDXX3600/1800	5070x5750x4700	3800



### 设备特点: FEATURES



- 01 采用龙门架 + 吸盘结构，采用中空发生器装置，无真空泵设计，节能降耗。  
Adopt gantry frame and sucker structure and hollow generator device, without vacuum pump design, energy saving and consumption reduction.
- 02 行走及升降采用伺服电机驱动，直线导轨机构，运行平稳。  
Walking and lifting adopts servo motor drive, linear guide rail mechanism, smooth operation.
- 03 可平放和立放，满足多种上下板要求。  
It can be placed horizontally and vertically to meet various requirements of upper and lower boards.
- 04 电气控制具备漏电保护功能。  
Electrical control with leakage protection function.

# 纳德远程数字化 陶瓷磨抛防污智能制造系统

## NADE REMOTE DIGITAL INTELLIGENT CONTROL SYSTEM OF CERAMIC POLISHING AND ANTIFOULING

★参照《中国制造 2025》，在满足陶瓷磨抛防污生产工艺技术的同时，具备远程数字化智能控制的功能，在数字化、信息化、智能化等方面领先一步。

Referring to "Made in China 2025", while meeting the requirements of ceramic polishing and antifouling production technology, it has the function of remote digital intelligent control, which is a step ahead in digitalization, information and intelligence.

★本系统由远程数控子系统、数据采集与视频监控子系统以及智能磨抛整线主机组成，本系统以设备互联、数据采集、数据共享、数据处理、数据输出、远程监控、远程操作以及生产数据分析为核心目的，利用物联网、大数据等共享平台，建立一站式工业数据采集与综合监控分析管理的解决方案。

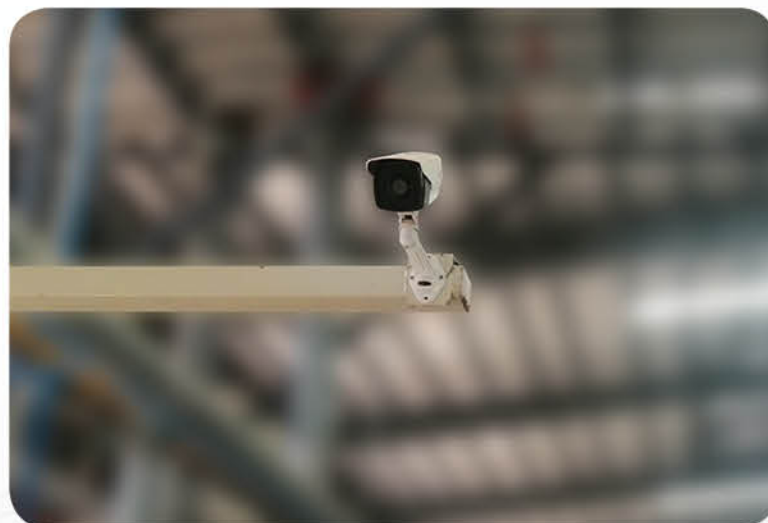
Comprising Remote CNC Subsystem, Date Collection & Video Surveillance Subsystem and Intelligent Grinding and Polishing Machine, NADE Remote Digital Intelligent Control System can realize Equipment interconnection, data acquisition, data sharing, data processing, data output, remote monitoring, remote operation and production data analysis. Using the IoT, big data and other sharing platforms, to establish one-stop industrial data collection and comprehensive monitoring, analysis and management solutions.



纳德远程数字化磨抛智能制造系统架构

## 01 数据采集与视频监控子系统

### Date Collection & Video Surveillance Sub System



交换机  
Switch

ERP 系统  
ERP system

★整线主机的运行情况受到有效、实时的视频监控，数据、操作界面可以远程同步到上位机，实现远程数字化监控和管理。  
The operation of the whole line is monitored by effective and real-time video, and the data and operation interface can be remotely synchronized to the host computer to realize remote digital monitoring and management.

★数据采集与视频监控子系统由数据采集控制终端、中控室数据平台两部分组成的，数据采集控制终端负责与生产设备衔接，接收数据并发送到中控室数据平台，中控室数据平台负责针对生产数据进行分析与监控，是本系统实现可视化的关键组成部分。  
NADE Remote Digital Intelligent Control System is controlled by a data acquisition terminal, the data platform composed of two parts, data collection and control interface terminal is in charge of production and equipment, receiving data is controlled and sent to the data platform, the data platform is responsible for the central control room for production data analysis and monitoring, is a key component of this system to realize visualization.

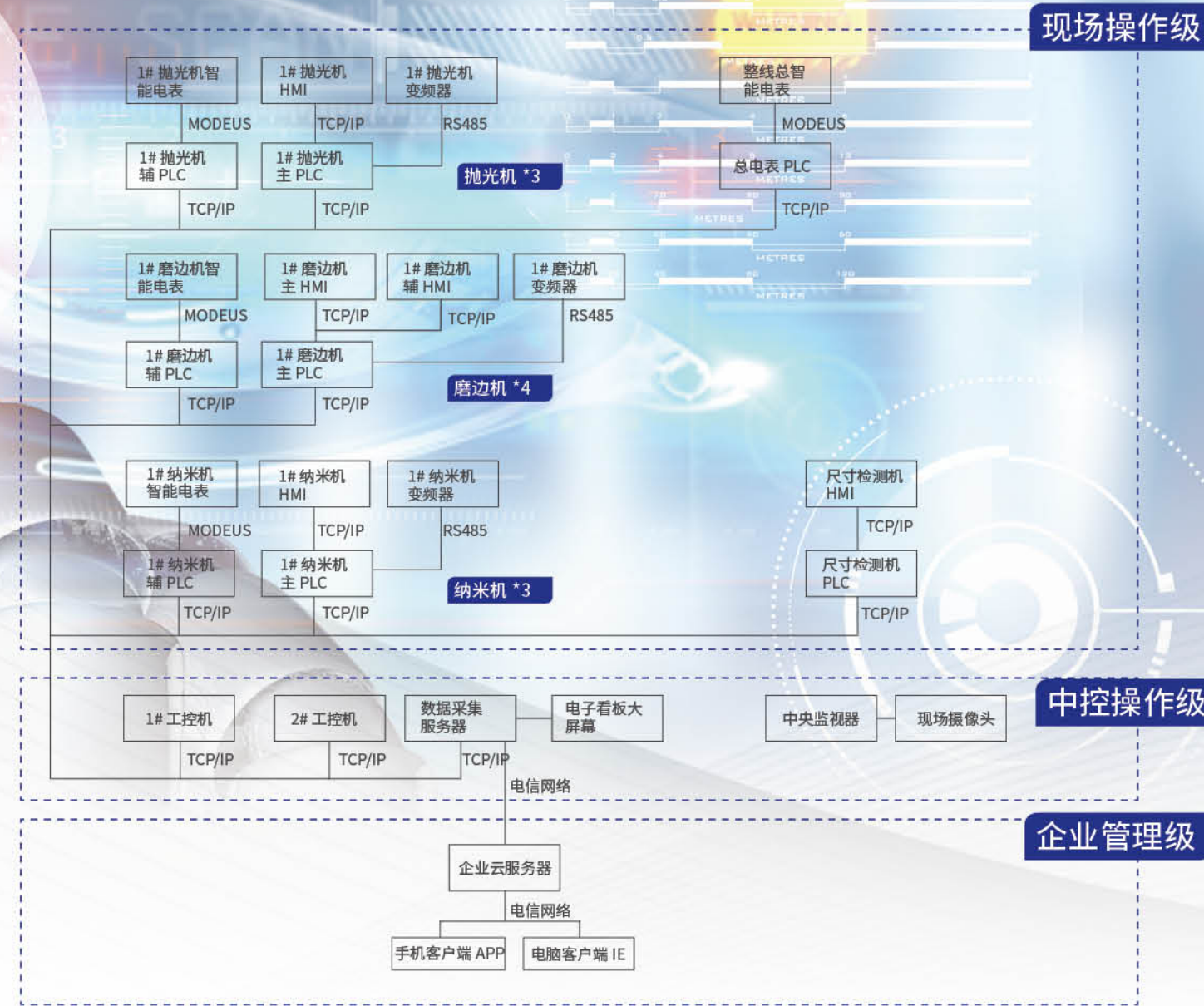
★将采集的各类数据上传至云平台，根据企业规划需求可实现随时随地通过手机或电脑等PC端直接调用查看。  
You can view the production data through mobile phones or computer terminals anytime and anywhere according to enterprise planning requirements.



## 02 智能磨抛防污 整线各主机

★可实时对生产参数进行采集，产生电子看板并进行管理分析，提供报表给企业管理层进行日常监督和财务核算，根据企业规划需求可实现随时随地通过手机或电脑终端查看生产数据。

★整线远程数字化操控，具备一键转产功能，可满足快速转产的需求，实现个性化柔性定制生产，替代传统的固定式生产流程。



### 中控操作级

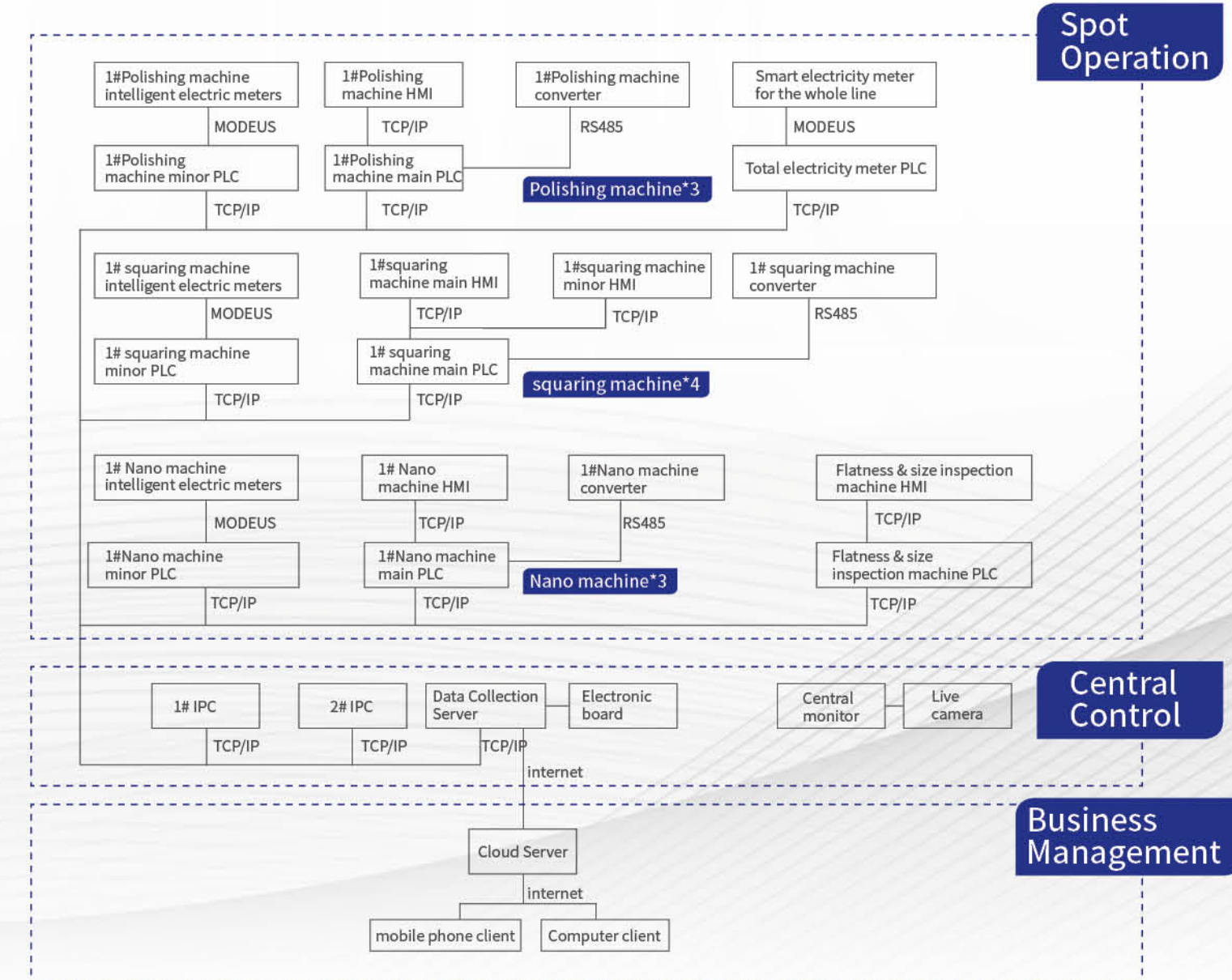


### 企业管理级



## The Main Machine Of Intelligent Grinding and Polishing Production Line

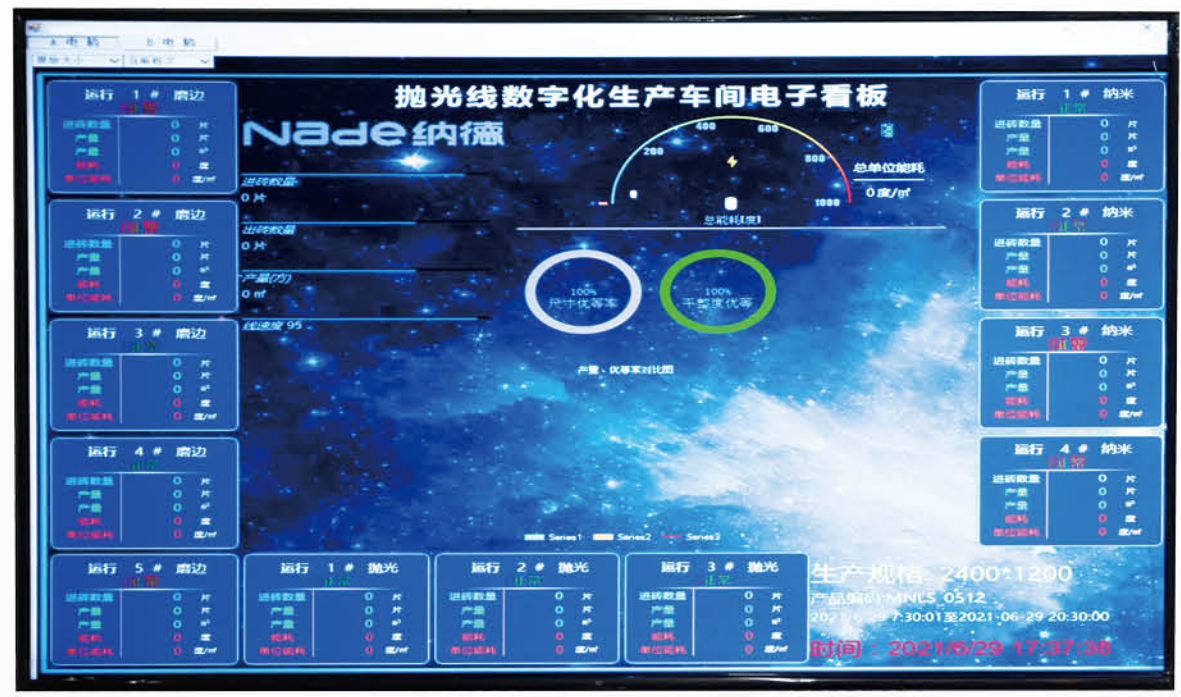
- ★ It can collect production parameters in real time, generate electronic board and conduct management analysis, provide reports to enterprise management for daily supervision and financial accounting, and view the production data through mobile phones or computer terminals anytime and anywhere according to enterprise planning requirements.
- ★ The whole line is controlled by Remote CNC Subsystem, with the function of one-button production conversion, which can replace the traditional production process and realize Flexible manufacturing.



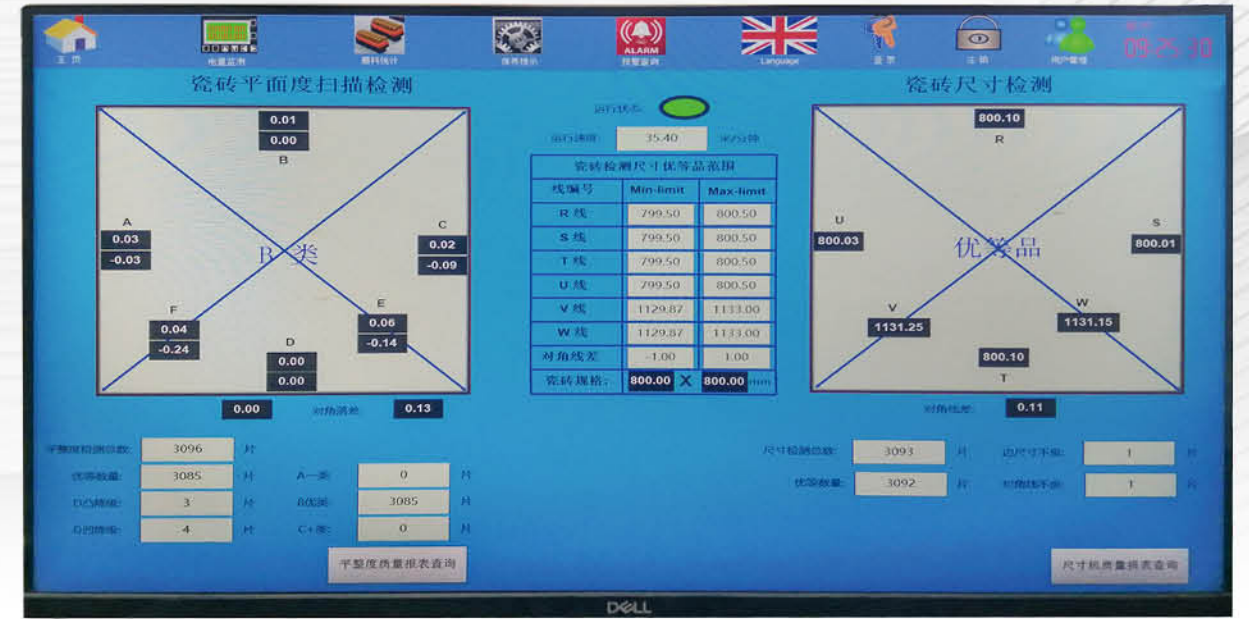
### 03 整线数字化电子看板及生产数据报表上云平台

The whole line production data report on the cloud platform

- ★ 远程数控子系统、数据采集与视频监控子系统、与配置在车间和中控室的视觉组件关联，实现对整线组网设备生产过程的远程数字化监控。每台设备既可在现场通过触摸屏参数化操作，亦可在中控室对现场设备进行操控。
- ★ Remote CNC Subsystem and Data Collection & Video Surveillance Subsystem can be associated with Visual components. Remote CNC Subsystem can realize remote digital monitoring of the production process of the whole line networking equipment. Each machine can be operated on site through touching screen, and can also be operated on site in central control room.



- ★ 生产线的现场情况能够在中控室实时查看，并且能够对设备进行远程管理、远程诊断，提高生产线的智能化水平；通过网络，将数据库中的数据，按照指定格式与 ERP 系统的数据库进行实时相互交流，实现在 ERP 系统中直接调用所需生产制造端数据，进行智能制造的相关流程操作。
- ★ The on-site situation of the production line can be viewed in real time in the central control room, and the equipment can be remotely managed and diagnosed, which can improve the intelligent level of the production line; Through the internet, the data in the database can be exchanged with the database of ERP system in real time in accordance with the specified format. You can also view the production data in the database of ERP system, and operate the machine.



# 弹性磨块 Lappato Abrasive

- 使用寿命长  
Long Lasting
- 精细磨削  
Fine Grinding
- 稳定性强  
Strong Stability
- 针对性强  
Strong Pertinence



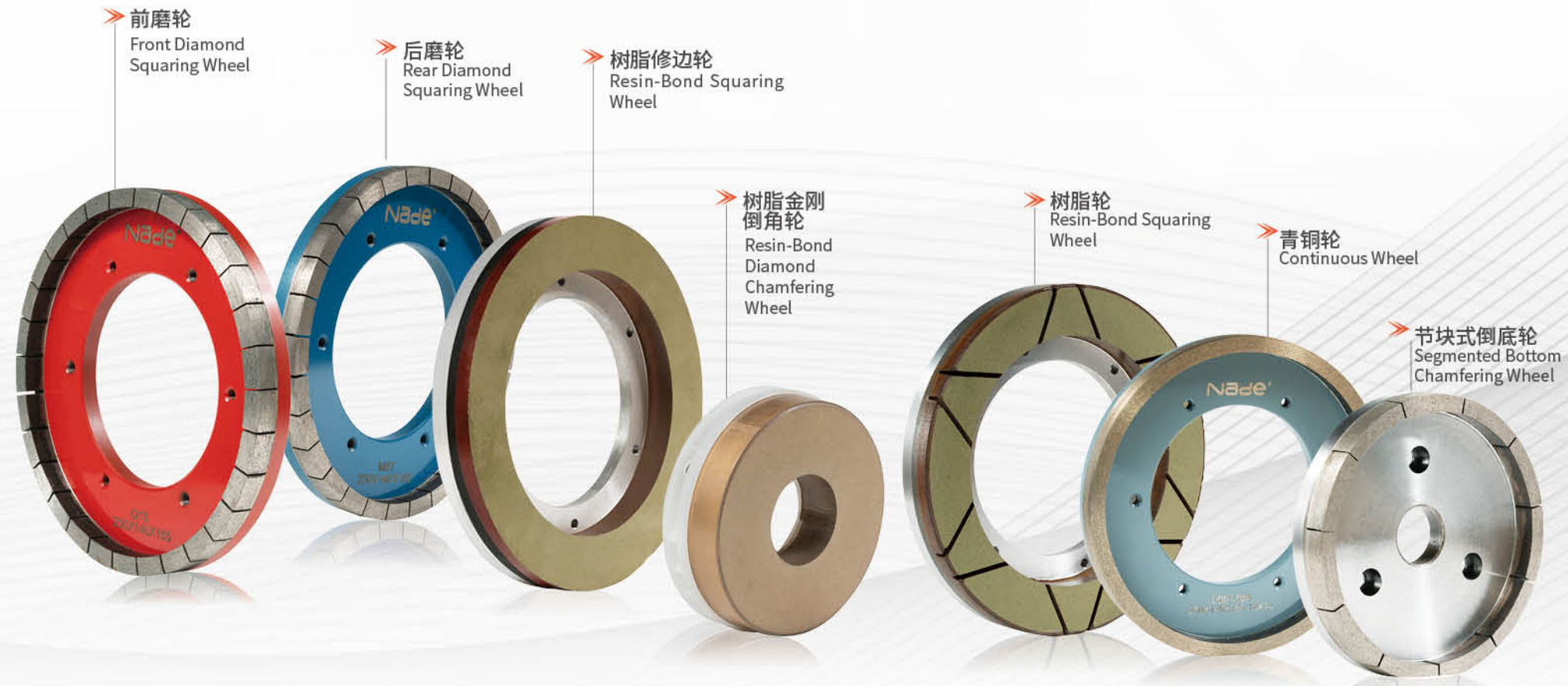
★ 抛釉磨块又称弹性磨块。主要对各种有釉陶瓷砖、大板及岩板等进行砖面的仿形全抛光或半抛光加工。具有仿形好、磨削力强、抛光光泽度高、无磨痕及使用寿命长等特点。具有多种规格和粒度号以满足不同的生产标准和工艺需求。

★ Lappato abrasive is a kind of Glaze polishing abrasive which is also called elastic abrasive. It's used for all kinds of ceramic glazed tiles, large slabs and Sintered Slabs, full or semi-polished processing of the tile surface. It has the characteristics of good profiling, strong grinding power, high polishing gloss, no wear marks and long service life. With a variety of specifications and grit size numbers to meet different production standards and process requirements.

# 水磨系列 Wet Squaring Series

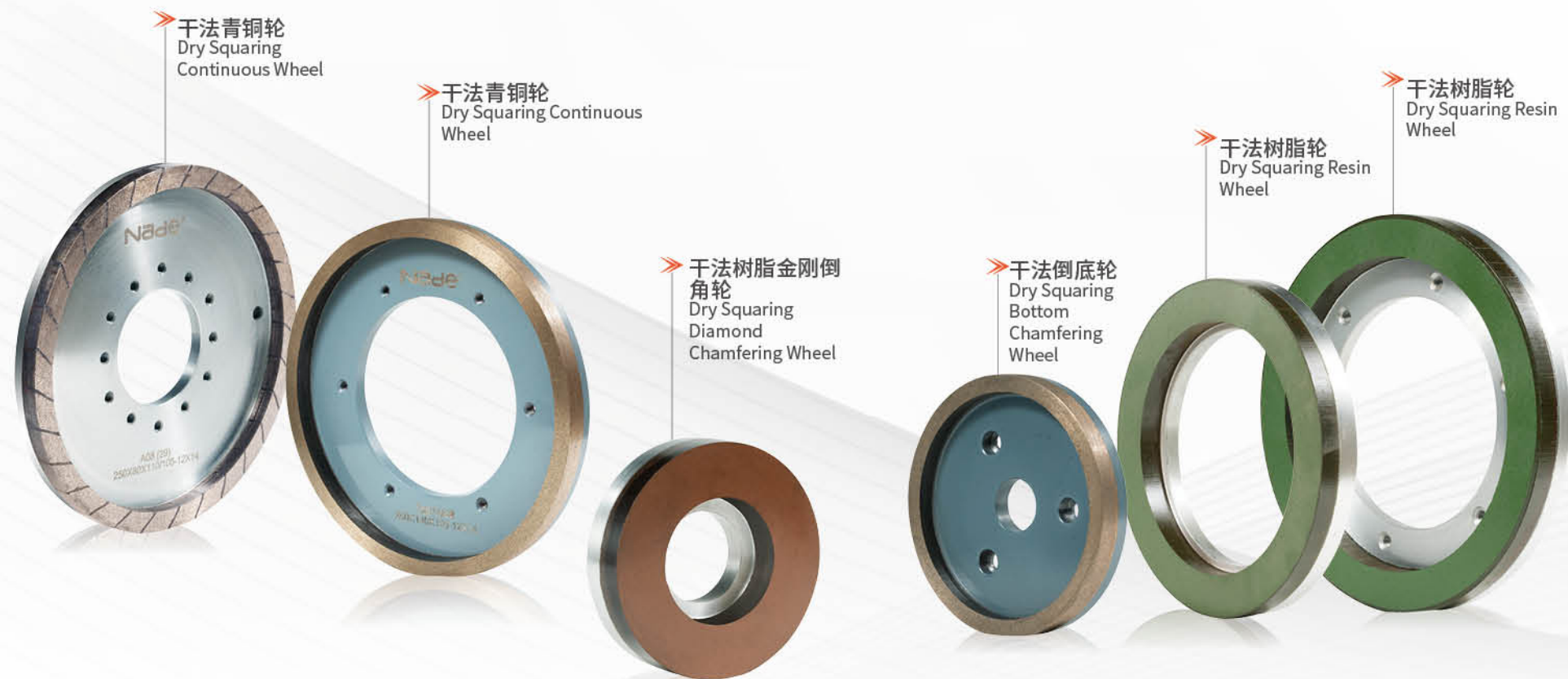
★ 金刚石水磨系列是在有冷却水的工况下，用于修正岩板及瓷砖四边的垂直度、大小头、波浪边以及统一规格尺寸。可配套多种磨边机使用，除常规产品外，可根据磨边机安装要求设定产品的尺寸，也可根据客户的工艺要求设定配方、尺寸及粒度。

★ This wet squaring series diamond wheel is used to correct the verticality, size, wavy edge and uniform size of the four sides of the Sintered Slab and ceramic tile under the working condition of cooling water. It can be used with a variety of squaring machines. In addition to conventional products, the size of the wheel can be set according to the installation requirements of the squaring machine, and the formula, size and grit size can also be set according to the customer's process requirements.



## 干磨系列 Dry Squaring Series

- ★ 金刚石干磨系列是在不需要水冷却的工况下，对岩板、瓷砖、瓷片进行精密磨削，达到传统湿法磨边的效果。磨削效果好、精细平滑、使用寿命长、锋利度好、使用能耗低、工艺控制严格、质量稳定。
- ★ The diamond dry squaring series is to precisely squar Sintered Slabs, ceramic tiles, and porcelain under working conditions that do not require water cooling to achieve the effect of traditional wet squaring. The squaring effect is good, fine and smooth, long service life, good sharpness, low energy consumption, strict process control, and stable quality.



## 金刚石磨块 Diamond Abrasive

- ★ 主要用于替代传统氧化镁结合碳化硅磨块对砖坯表面进行粗、中磨。独特的原料配方，先进的生产工艺，确保了金刚石磨块在磨削效率、磨削效果、稳定性、经济性、可靠性方面的完美表现。
- ★ It is mainly used for coarse and medium polishing of tiles surface instead of traditional magnesia bonded silicon carbide abrasive. The unique raw material formula and advanced production technology ensure the perfect performance of diamond abrasive in polishing efficiency, grinding effect, stability, economy and reliability.



▲ 金刚石磨块  
Diamond Abrasive



▲ 金刚磨块 (T2、船型)  
Diamond Grinding Abrasive (T2, Ship Type)

## 碳化硅磨块 Silicon Carbide Abrasive

用于瓷砖表面的中磨、细磨直到抛光，具有切屑力强、效率高、上光速度快、光泽度高、综合成本低等优越性能。

Used for medium grit polishing, fine grit grinding and polishing of ceramic tile surface, with excellent performance such as strong chip power, high efficiency, fast polishing speed, high gloss and low comprehensive cost.  
Parameter description.



## 研磨刷 Brush

研磨刷又名哑光刷。此产品安装于普通抛光机上，对仿古砖、瓷质砖的平面、凹凸面和羊皮面等进行仿哑光处理，使用寿命长，加工效果好（使砖面呈现丝绸缎面及仿古效果），光度在 6-70°之间。

Grinding brushes are used on normal polishing machines to make mat and flexible grinding in order to achieve silk-like and rustic-like effect on different surface of glazed porcelain tiles and granito tiles, such as flat surface, concave and convex surface and sheepskin surface etc. The tiles gloss after processing can be controlled from 6 and 70°.



## 树脂金刚石磨块 Resin Diamond Abrasive

- ★ 用于陶瓷抛光砖等表面的进一步细磨、精磨，能够继续提高表面光度，具有磨削效果好，使用寿命长，抛光效果好、综合成本低的特点。
- ★ Used for further fine polishing and fine polishing on the surface of ceramic polishing tiles, etc., which can continue to improve the surface glossy, has the characteristics of good polishing effect, long service life, good polishing effect and low comprehensive cost.
- ★ 用于陶瓷大板、大规格瓷砖的粗中磨，对控制水波纹有显著效果。
- ★ Used for coarse and medium grinding of ceramic big slab, which has remarkable effect on controlling the tiles surface glaze waviness.



▲ 异形结构 L170  
Special-Shaped Structure L170



▲ 平板磨块 L140  
Flat Abrasive L140

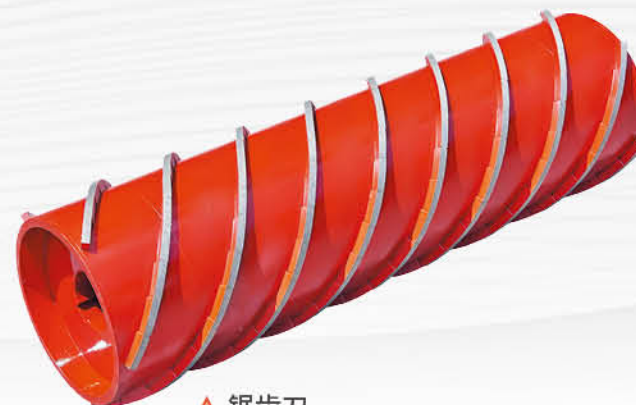
## 纤维磨块 Fiber Abrasive

- ★ 此产品安装于通用型抛光机上，对仿古砖、瓷质砖的平面、凹凸面和羊皮面等进行仿形哑光处理，使用寿命长，加工效果好（光度均匀和纹理清晰，使砖面呈现丝绸缎面及仿古效果），光度在 6° -70°之间。
- ★ This product is installed in the general polishing machine, which is used to copy the plane, concave and convex surface and lambskin like surface of rustic and porcelain tiles, etc., with long service life and good processing effect (uniform glossy and clear texture make the tiles surface present silk satin and archaize effect), and the glossy is between 6° -70°.

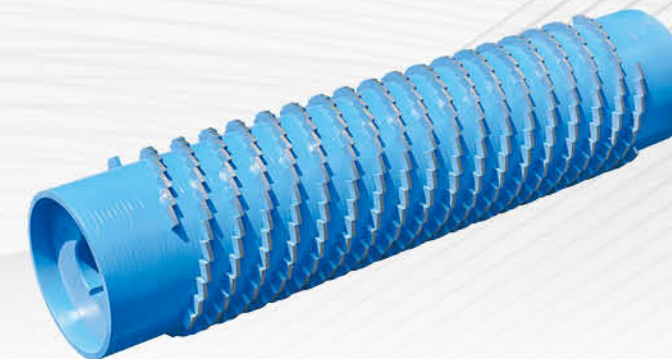


## 金刚石滚刀 Diamond Roller

- ★ 金刚石滚刀是目前陶瓷加工最常用的工具之一，主要用于陶瓷砖坯抛光前的刮平定厚。本公司采用最新配方技术和先进的生产工艺，所生产的金刚石滚刀具有锋利度好、寿命长，使用能耗低、工作噪音小、质量稳定、加工效果好等特点。
- ★ Diamond calibrating roller is one of the most commonly used too in ceramic processing, mainly used in ceramic tile surface pacifying and adjusting thickness before polishing. The company using the latest technology formula and advanced production technology, the production of diamond cutter has good sharpness, long service life, low energy consumption, low noise, stable quality, good processing effect, etc.



▲ 锯齿刀  
Sawtooth Roller



▲ 滚刀  
Normal Roller

## 超洁亮陶瓷纳米液 -A Super Clean Nano Liquid-A

### 主要技术原理:

通过纳米抛光机磨盘,用超洁亮纳米液 -A 对陶瓷砖做打磨处理,首先对陶瓷砖表面的微细毛孔及微裂纹进行填充,进而在陶瓷砖表面形成一层致密、连续的纳米镀层。经过后期处理的陶瓷砖不仅具有良好的质感和通透性,而且还具有持久防污、耐磨、耐酸碱等功能,能有效的防止油污、墨水等对陶瓷砖的侵蚀。是陶瓷砖超洁亮防污工艺中的主要原料。

### Main technical principle:

The ceramic tiles are polished with super clean nano liquid-A through the nano polishing machine. Firstly, the micropores and microcracks on the surface of the ceramic tile are filled, and then a dense and continuous nano-coating layer is formed on the surface of the ceramic tile. The post-processed ceramic tiles not only have good texture and permeability, but also have long-lasting antifouling, abrasion resistance, acid and alkali resistance and other functions, which can effectively prevent the erosion of oil and ink on the ceramic tiles. It is the main raw material in the super clean anti-fouling process of ceramic tiles.



Nade



YouTube



### 主要分类 Main classification

## 01 纳米浓缩液 -NA Nano concentrated liquid-NA.

用于填充含有较大微孔的陶瓷砖表面防污预处理,可根据不同陶瓷砖的防污要求调整纳米浓缩液的粒度。

It is used to fill the surface antifouling pretreatment of ceramic tiles with larger micropores. The particle size of the nano-concentrate can be adjusted according to the antifouling requirements of different ceramic tiles.



小粒径  
Small Particle Size

大粒径  
Big Particle Size

## 超洁亮陶瓷纳米液 -A Super Clean Nano Liquid-A

## 02 超洁亮抛光液 -CA Super clean Nano liquid-CA

用于填充细小的微孔、形成结晶纳米镀层,达到持久耐磨及防污的效果,可根据不同颜色的陶瓷砖面选配抛光液的型号及种类。

It is used to fill micropores and form a crystalline nano-plating layer to achieve long-lasting wear-resistant and anti-fouling effects. The model and type of polishing liquid can be selected according to the ceramic tile surface of different colors.



透明纳米液  
Transparent Nano Liquid

棕色纳米液  
Brown Nano Liquid

橙色纳米液  
Orange Nano Liquid

黑色纳米液  
Black Nano Liquid

蓝色纳米液  
Blue Nano Liquid



## 陶瓷防污剂 -B Ceramic Antifouling Agent-B

### 主要技术原理:

用于超洁亮处理工艺的后续表面防护工序, 防污剂中的防污因子可渗透到微孔内壁及微裂缝间, 与砖体作用形成致密的结合体, 可充分填充修补陶瓷表面的微孔并形成结晶, 能有效的防止油污、墨水等对陶瓷的侵蚀。

### Main technical principle:

Used in the subsequent surface protection process of the super clean treatment process, the anti-fouling factor in the anti-fouling agent can penetrate into the inner wall of the micropores and the micro cracks, and form a dense combination with the tile body, which can fully fill and repair the surface of the ceramic tile micropores after crystals are formed, which can effectively prevent the erosion of ceramic tiles by oil stains and ink.



油性  
Oil Base

水性  
Water Base

## 01 油性防污剂 -B1 Oil base antifouling agent-B1

选用烷烃类渗透剂和硅油类成分组合, 渗透剂带动硅油类防污成份渗透到陶瓷砖坯体内部, 并与陶瓷砖进行充分的复合复配, 帮助陶瓷砖达到理想的防污效果。

The combination of alkane penetrant and silicone oil component is selected. The penetrant drives the silicone oil antifouling component to penetrate into the ceramic tile body, and is fully compounded with the ceramic tile to help the ceramic tile achieve the ideal antifouling effect.

## 02 水性防污剂 -B2 Water base antifouling agent-B2

选用水作为溶剂载体, 将硅油类成份进行乳化制备而成, 安全环保(非易燃品), 具有理想的防污效果。

Water is selected as the solvent carrier, and the silicone oil ingredients are emulsified. It is safe and environmentally friendly (non-flammable) and has an ideal antifouling effect.

## 特色产品 Special Products

## 01 柔光(亚光)砖防污剂 -YB Matt tiles antifouling agent-YB

在油性防污剂 -B1 的基础上进行二次开发, 适用于亚光、柔光砖的防污处理。适度调整配方和工艺即可实现不同的砖面光度(如: 18~28 度, 55~70 度等), 能有效的防止油污、墨水等对陶瓷的侵蚀。

This product developed base on secondary development of oil base antifouling agent-B1, it is suitable for matt tiles or soft-glossiness tiles. By little adjustment of the process, easy to achieve different glossy of tile surface (such as 18~28 degree, 55~70 degree), it is capable for avoid the corrosion of oil, ink and so on.

## 02 防滑、抗菌纳米液及其工艺技术应用 Anti-slip, antibacterial nano-liquid and its process technology application

将防滑、抗菌因子添加到超洁亮纳米液及水性防污剂中, 应用到陶瓷砖纳米抛光液超洁亮工艺加工中。结合纳德超洁亮纳米机、打蜡机, 在超洁亮纳米液填充打磨过程中能将防滑、抗菌因子有效的吸附、渗透进砖体内部, 与砖体表面及内部的硅酸盐进行反应结合, 形成持久的防滑、抗菌效果。

The anti-slip and antibacterial factors are added to the super clean and bright nano-liquid and the water-based antifouling agent, and applied to the ceramic tile nano-polishing liquid super clean process. Combined with the Nade super clean nano machine and waxing machine, the anti-slip and anti-bacterial factors can be effectively absorbed and penetrated into the tile body during the filling and polishing process of the super clean nano liquid, and it can interact with the silicate on the surface and the inside of the tile body. React and combine to form long-lasting anti-slip and antibacterial effects.

## 03 具体应用工艺 Specific application process

(1) 使用防滑、抗菌纳米液对粗砖坯进行初步预处理, 堵塞粗大毛孔, 得到表面效果良好的砖体。专用设备 -- 纳德超洁亮抛光机。

(1) Use anti-slip, antibacterial nano-liquid to pre-treat the rough tiles to fill the large pores and obtain tiles with good surface effects. Special equipment-Nade super clean polishing machine.

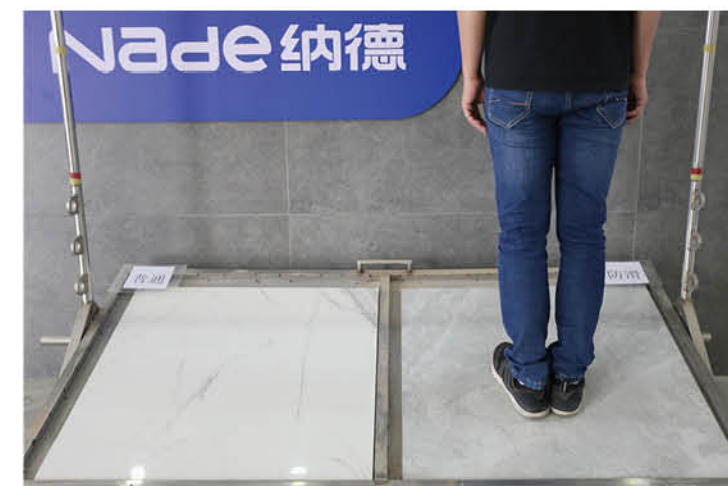
(2) 使用防滑、抗菌液对第一步的预处理的砖坯进一步的处理, 使防滑、抗菌因子进一步吸附在砖体表面。专用设备 -- 纳德超洁亮抛光机。

(2) Use anti-slip and antibacterial liquid to further process the pre-treated tile in the first step, so that the anti-slip and antibacterial factors are further absorbed on the surface of the tile body. Special equipment-Nade super clean polishing machine.

(3) 在第二步处理的砖体表面涂覆水性抗菌防污剂, 增强抗菌功能。专用设备 -- 纳德打蜡机。

(3) Coat the surface of the tile body treated in the second step with a water-based antibacterial antifouling agent to enhance the antibacterial function. Special equipment-Nade waxing machine.

### 防滑测试 Anti-slip testing



柔光专用纳米液  
Mantt Tiles Nano Liquid

抗菌防滑纳米液  
Anti-Slip & Antibacterial Nano-Liquid

抗菌防污剂  
Antibacterial & Antifouling Agent

依据 GB/T 4100 标准进行静摩擦系数检验防滑测试数据:

Anti-slip performance testing base on standard GB/T 4100 static friction coefficient:

检验项目	检验结果			
		空白样	20% 防滑纳米液 -B	30% 防滑纳米液 -B
静摩擦系数	干法	0.50	0.68	0.66
	湿法	0.44	0.59	0.63
Testing Item	Testing result			
		Blank sample	20% Anti-slip nano liquid	30% Anti-slip nano liquid
static friction coefficient	Dry model	0.50	0.68	0.66
	Wet model	0.44	0.59	0.63

GUANGDONG DETECTION CENTER OF MICROBIOLOGY

### 分析检测结果 ANALYSIS AND TEST RESULT

报告编号 (Report.No.): 2020FM054 17R01

测试微生物	空白对照 样品 "0" 接触菌落总数 (cfu/片)	空白对照 样品培养 24h 后菌落总数 (cfu/片)	抗菌陶瓷试样 培养 24h 后菌落总数 (cfu/片)	抗菌率 (%)
大肠杆菌 (Escherichia coli) 6S AS1.90 C	8.0x10 <sup>3</sup>	1.2x10 <sup>7</sup>	< 20	>99.99
金黄色葡萄球菌 (Staphylococcus aureus) AS1.89	6.0x10 <sup>3</sup>	4.1x10 <sup>5</sup>	<20	>99.99
白色念珠菌 (Candida albicans) ATCC 10231	8.4x10 <sup>3</sup>	1.7x10 <sup>4</sup>	<20	>99.99

microorganisms test	Blank Control zero contact CFU in the sample	Blank Control CFU after 24 hours sample culturing	CFU after 24 hours culturing of Antibacterial ceramic	Antibacterial ratio

# 纳德全球市场分布 NADE Global Markets



- |  |  |  |  |  |  |  |  |  |
|--|--|--|--|--|--|--|--|--|
|  |  |  |  |  |  |  |  |  |
|  |  |  |  |  |  |  |  |  |
|  |  |  |  |  |  |  |  |  |
|  |  |  |  |  |  |  |  |  |
|  |  |  |  |  |  |  |  |  |

# 纳德长期服务的著名品牌 (排名不分先后) Famous brands that Nade has served for a long time (in no particular order)

- |  |  |  |  |  |  |  |
|--|--|--|--|--|--|--|
|  |  |  |  |  |  |  |
|  |  |  |  |  |  |  |
|  |  |  |  |  |  |  |
|  |  |  |  |  |  |  |

综合配套服务  
Full-Range Technical Services